



PGCPS . **ENGAGE . DESIGN . BUILD . COMMUNICATE** . PGCPS



HYATTSVILLE MIDDLE SCHOOL

CONSTRUCTION UPDATE MEETING | OCTOBER 17th, 6:00 PM

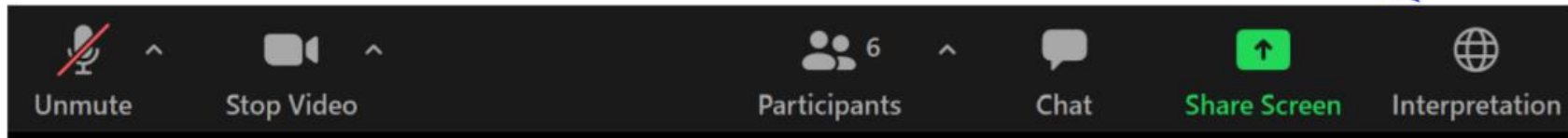


PRINCE GEORGE'S COUNTY
EDUCATION & COMMUNITY PARTNERS

SERVICIOS DE INTERPRETACIÓN

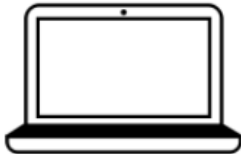
INTERPRETING SERVICES

La interpretación simultánea
está disponible en español.
*Simultaneous interpretation is
available in Spanish.*



SERVICIOS DE INTERPRETACIÓN

INTERPRETING SERVICES



On a computer-- At the bottom of the screen will be an interpretation globe. Click that globe and then select *Spanish*.

En una computadora-- En la parte baja de la pantalla habrá un globo de interpretación. Haga clic en ese globo y seleccione "Spanish."



On a mobile device-- At the bottom of the screen, tap the ellipses icon on the bottom right (...).

- Tap *Language Interpretation*.
- Tap *Spanish*.

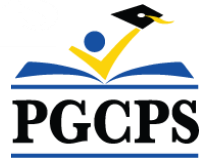
En un dispositivo móvil-- En la parte baja de la pantalla, toca el icono de elipses en la parte baja derecha (...).

- Toque *Language Interpretation*.
- Toque *Spanish*.



We value your input.

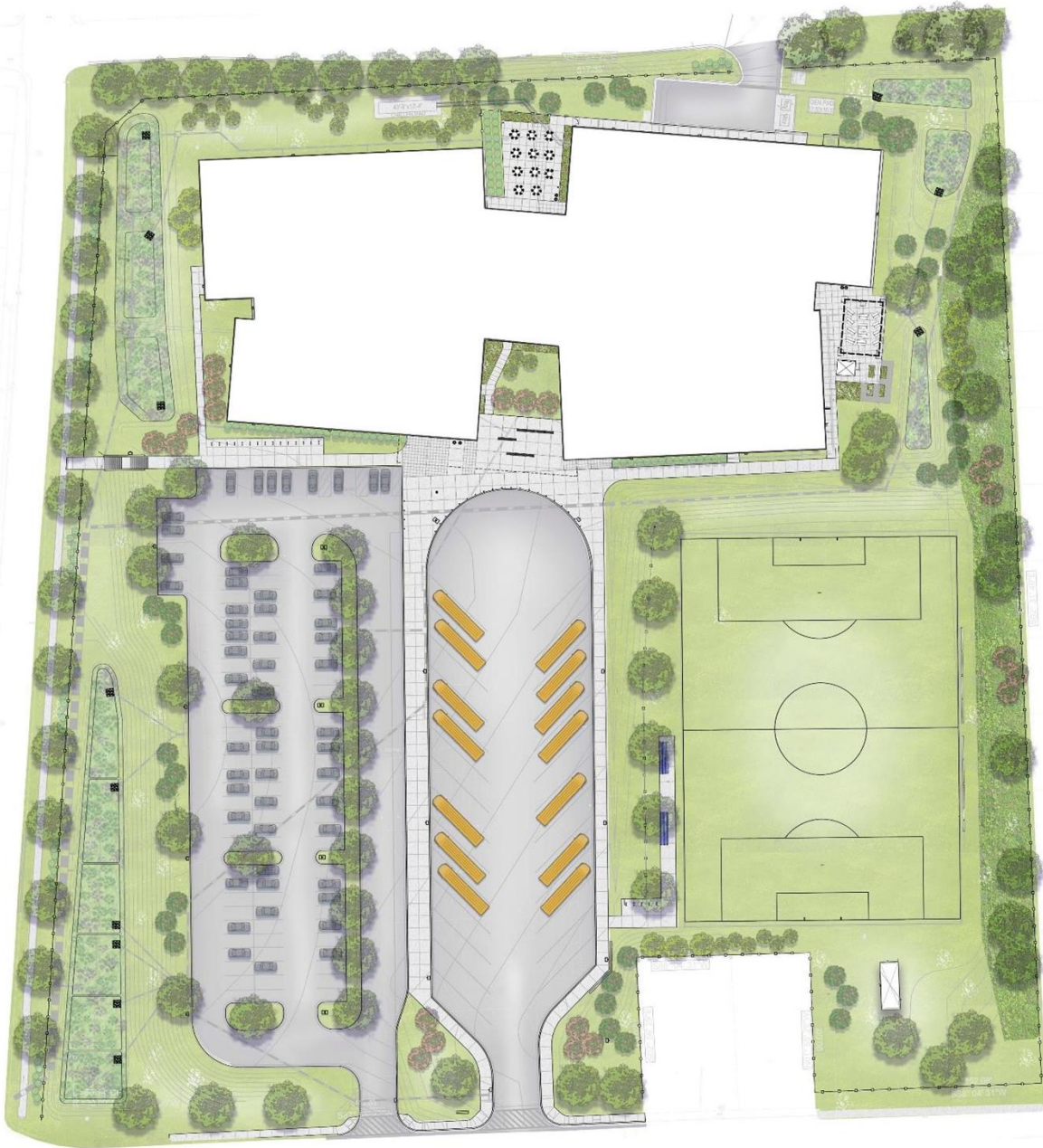
- Please type your questions/comments in the Q&A area of Zoom.
- Questions and answers from this town hall will be posted on pgcpsblueprintschools.com.



Our Commitment

PGCPS is moving swiftly to deliver safe, state-of-the-art, and sustainable learning environments for our students, teachers, and communities.

Through a three-pronged approach - the traditional Capital Improvement Program, Staged Renovations, and the nation's first Public School bundled schools approach, otherwise known as the Blueprint Schools Program - we're on track to deliver over 25 modernized school facilities in just 10 years.



Agenda

- Team Introductions
- Project Scope
- Construction Overview
- Q&A



Team Introductions

- Jason Washington, Director, Blueprint Schools
- Brandey McDonald, Principal in Charge, PGCECP
- Jose Lopez, Project Manager, B&D
- Mike Ricketts, Senior Project Executive, Gilbane
- Brian Malanchuk, Senior Project Executive, Gilbane
- Arland Knipe, Project Executive, Gilbane
- Chelsea Beacom, Project Manager, Gilbane



Project Scope

Project Status: Construction

Square Footage: 162,610 SF

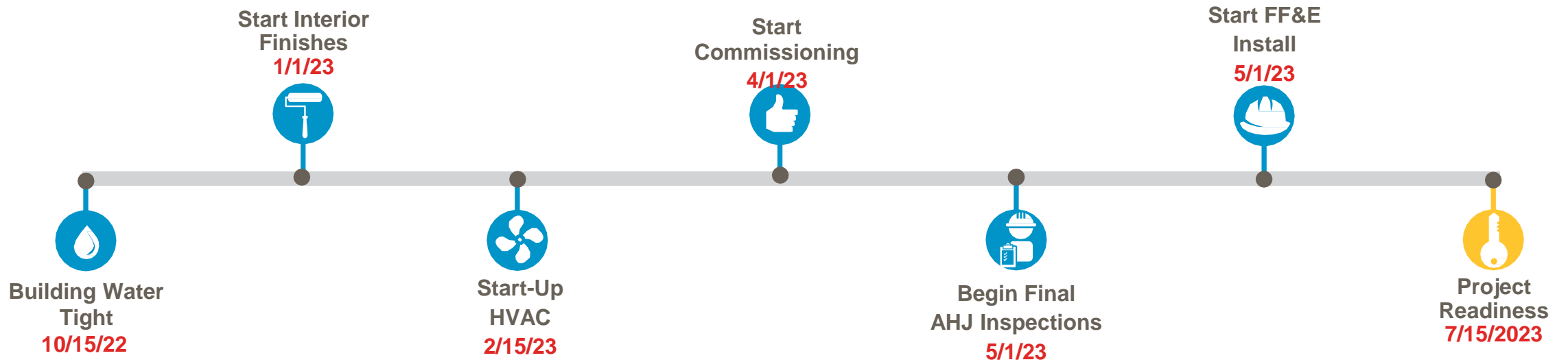
Occupancy: 1,200 students

Address: 6001 42nd Ave, Hyattsville, MD
20781

School Overview: **School Amenities**

<ul style="list-style-type: none">• Maryland High Performance Building	<ul style="list-style-type: none">• Full community-use<ul style="list-style-type: none">• <i>Campus Facilities</i>
<ul style="list-style-type: none">• Solar Ready/EV Charging Infrastructure	<ul style="list-style-type: none">• LEED Silver Equivalence
<ul style="list-style-type: none">• Black Box Theater	<ul style="list-style-type: none">• Fully Wireless Campus
<ul style="list-style-type: none">• Outdoor Classroom	<ul style="list-style-type: none">• Open-concept media center
<ul style="list-style-type: none">• Fully Wireless Campus	<ul style="list-style-type: none">• Heightened stormwater management controls
<ul style="list-style-type: none">• STEAM Lab	<ul style="list-style-type: none">• Portable Performance Stage

Construction Overview



Construction Overview

Completed Work	Work in Progress	Next Steps
Exterior wall panel installation	Installation of exterior windows	Interior door frame installation
TPO roofing installation	Interior stud wall framing and one-sided drywall partitions	Elevator equipment delivery and installation
Primary and secondary steel	Interior MEPF overhead and in-wall rough-ins	Curb, gutter, and base coat asphalt installation
Interior CMU block wall construction	Main mechanical room and electrical room rough-ins	
	Parking lot grading	
	Installation of underground site utilities	

Construction Overview



Construction Overview



Construction Overview



Construction Overview



Construction Overview



Construction Overview



Questions & Answers

Please note, we will only addressing construction updates and logistics questions. All programming or operational questions will be addressed at a later date.

Thank You!

To submit additional questions and to view today's presentation, visit www.pgcpsblueprintschools.com