



PGCPS . **ENGAGE . DESIGN . BUILD . COMMUNICATE** . PGCPS



SONIA SOTOMAYOR MIDDLE SCHOOL AT ADELPHI

CONSTRUCTION UPDATE MEETING | OCTOBER 11th, 7:30 PM

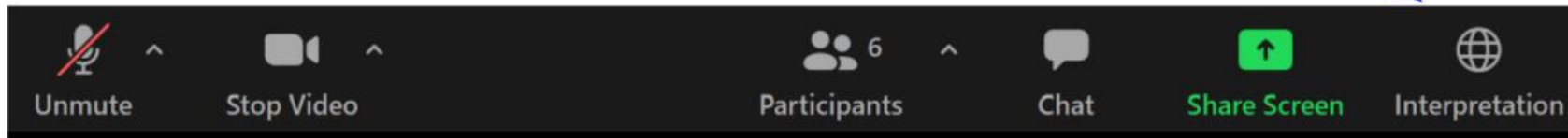


PRINCE GEORGE'S COUNTY
EDUCATION & COMMUNITY PARTNERS

SERVICIOS DE INTERPRETACIÓN

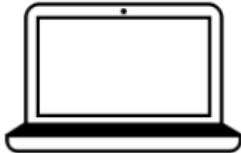
INTERPRETING SERVICES

La interpretación simultánea
está disponible en español.
*Simultaneous interpretation is
available in Spanish.*



SERVICIOS DE INTERPRETACIÓN

INTERPRETING SERVICES



On a computer-- At the bottom of the screen will be an interpretation globe. Click that globe and then select *Spanish*.

En una computadora-- En la parte baja de la pantalla habrá un globo de interpretación. Haga clic en ese globo y seleccione "Spanish."



On a mobile device-- At the bottom of the screen, tap the ellipses icon on the bottom right (...).

- Tap *Language Interpretation*.
- Tap *Spanish*.

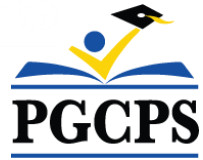
En un dispositivo móvil-- En la parte baja de la pantalla, toca el icono de elipses en la parte baja derecha (...).

- Toque *Language Interpretation*.
- Toque *Spanish*.



We value your input.

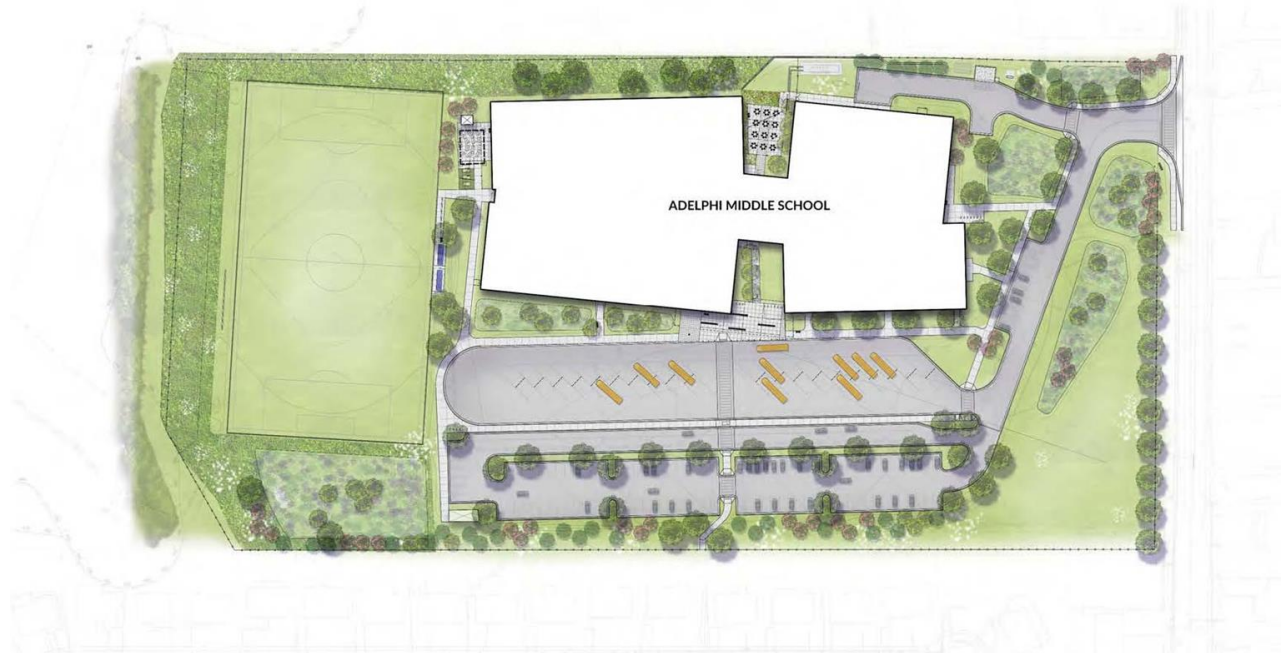
- Please type your questions/comments in the Q&A area of Zoom.
- Questions and answers from this town hall will be posted on pgcpsblueprintschools.com.



Our Commitment

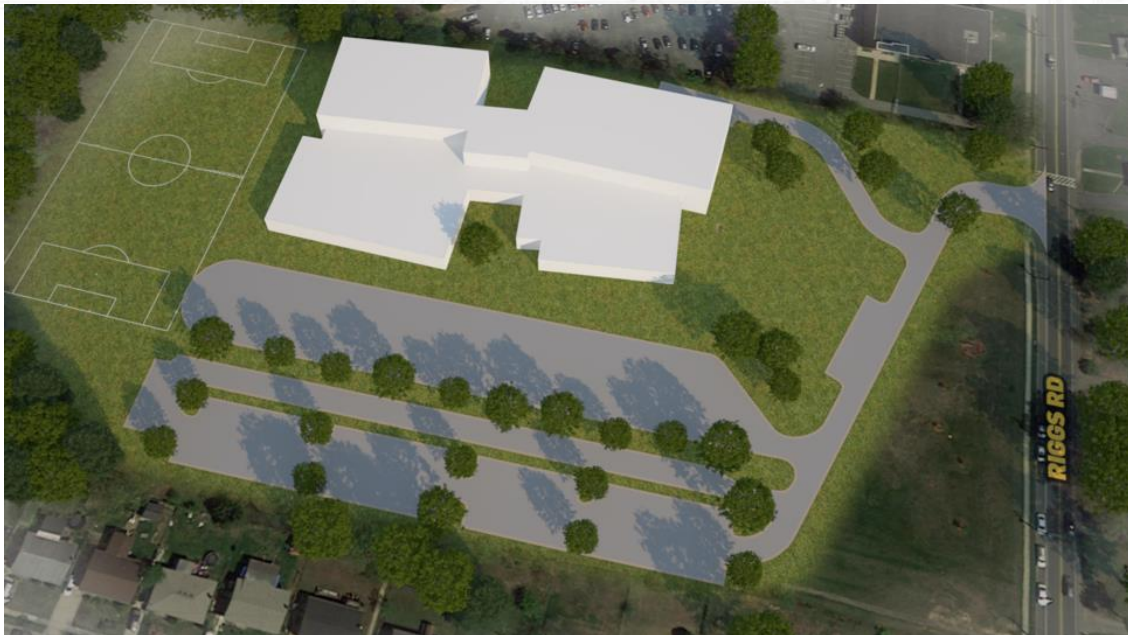
PGCPS is moving swiftly to deliver safe, state-of-the-art, and sustainable learning environments for our students, teachers, and communities.

Through a three-pronged approach, traditional Capital Improvement, Staged Renovations, and the nation's first Public School P3 Design-Build-Maintain approach, otherwise known as the Blueprint Schools Program, we're on track to deliver over 25 modernized school facilities in just 10 years.



Agenda

- Team Introductions
- Project Scope
- Construction Overview
- Q&A





Team Introductions

- **Jason Washington**, Director, Blueprint Schools
- **Brandey McDonald**, Principal in Charge, PGCECP
- **Mike Ricketts**, Senior Project Executive, Gilbane
- **Brian Malanchuk**, Senior Project Executive, Gilbane
- **Christian Broyles**, Project Executive, Gilbane
- **Tony Grab**, Project Manager, Gilbane
- **Jose Lopez**, Project Manager, B&D



Project Scope

Project Status: Construction

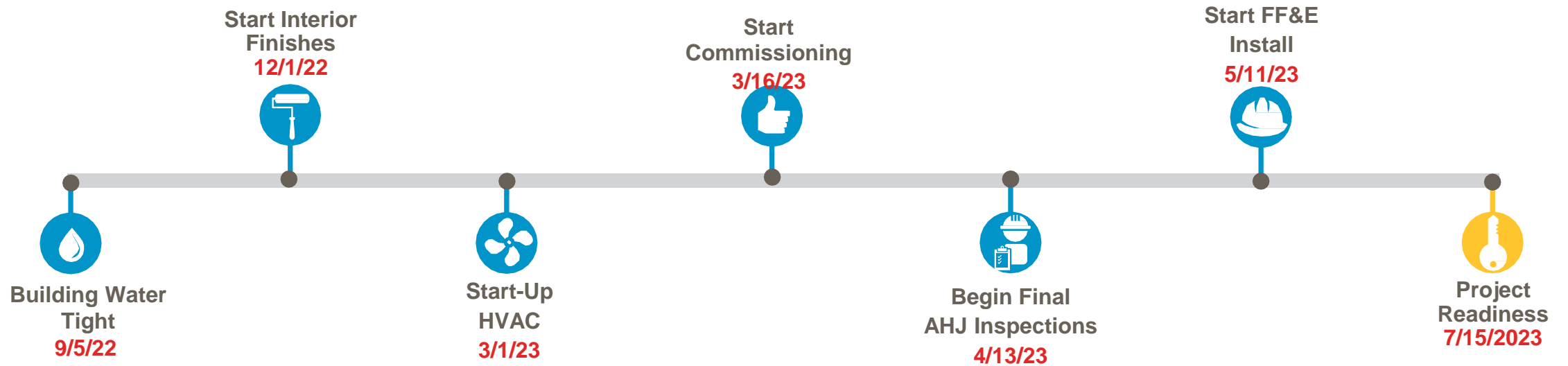
Square Footage: 144,800 SF

Occupancy: 1,200

Address: 8820 Riggs Road,
Adelphi, MD 20783

School Specific Enhancement:
Artificial Turf Field

Construction Overview



Construction Overview

Completed Work	Work in Progress	Next Steps
Exterior wall panel installation	Installation of exterior windows	Elevator equipment delivery and installation
TPO roofing installation	Interior stud wall framing and one-siding drywall partitions	Curb, gutter, and base coat asphalt installation
Primary and secondary steel	Interior MEPF overhead and in-wall rough-ins	
Interior CMU block wall construction	Main mechanical room and electrical room rough-ins	
	Interior door frame installation	
	Parking lot grading	
	Installation of underground site utilities	

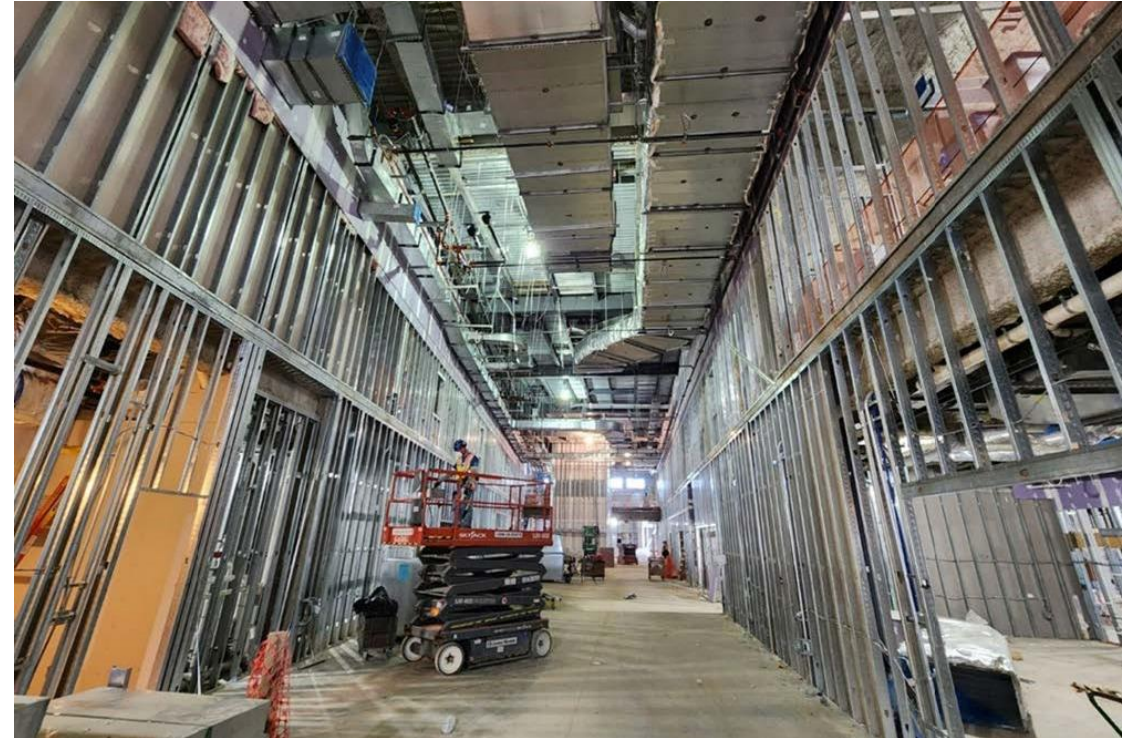
Construction Overview



Construction Overview



Construction Overview



Construction Overview



Questions & Answers

Please note, we will only be addressing construction update and logistics questions. All programming or operational questions will be addressed at a later date.

Thank You!

To submit additional questions and to view today's presentation, visit www.pgcpsblueprintschools.com