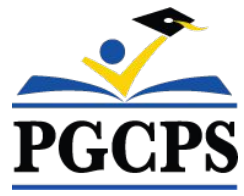




PGCPS . ENGAGE . DESIGN . BUILD . COMMUNICATE . PGCPS

# SUITLAND HIGH SCHOOL

PROJECT UPDATE MEETING | APRIL 2nd, 5:30 PM



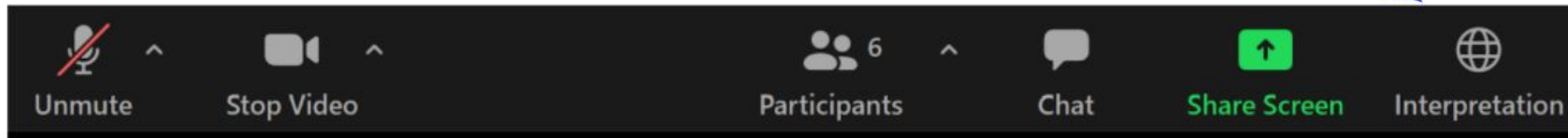
DEPARTMENT OF  
CAPITAL PROGRAMS  
PRINCE GEORGE'S COUNTY PUBLIC SCHOOLS



# SERVICIOS DE INTERPRETACIÓN

## *INTERPRETING SERVICES*

La interpretación simultánea  
está disponible en español.  
*Simultaneous interpretation is  
available in Spanish.*



# SERVICIOS DE INTERPRETACIÓN

## *INTERPRETING SERVICES*



**On a computer**-- At the bottom of the screen will be an interpretation globe. Click that globe and then select *Spanish*.

**En una computadora**-- En la parte baja de la pantalla habrá un globo de interpretación. Haga clic en ese globo y seleccione "Spanish."

---



**On a mobile device**-- At the bottom of the screen, tap the ellipses icon on the bottom right (...).

- Tap *Language Interpretation*.
- Tap *Spanish*.

**En un dispositivo móvil**-- En la parte baja de la pantalla, toca el icono de elipses en la parte baja derecha (...).

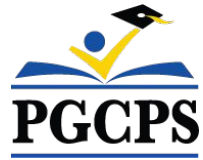
- Toque *Language Interpretation*.
- Toque *Spanish*.



## We value your input.

- Please type your questions/comments in the Q&A area of Zoom.
- Questions and answers from this town hall will be posted at [www.pgcps.org/cip](http://www.pgcps.org/cip).





## Our Commitment

PGCPS is moving swiftly to deliver safe, state-of-the-art, and sustainable learning environments for our students, teachers, and communities.

Through a three-pronged approach, traditional Capital Improvement, Staged Renovations, and the nation's first Public School P3 Design-Build-Maintain approach, otherwise known as the Blueprint Schools Program, we're on track to deliver over 25 modernized school facilities in just 10 years.



## Agenda

- Team Introductions
- Project Scope Review
- Project Phasing Review
- Project Timeline
- Construction Update
- Community Engagement
- Q&A

# Team Introductions



**Jason Washington**  
Associate Superintendent of  
Supporting Services



**Shayla Jackson**  
Acting Director  
Department of Capital Programs



# Team Introductions

 Proud Alum!



**Will Smith**  
Project Management Supervisor,  
PGCPS Capital Programs

 Proud Alum!



**Sean Nickols**  
Project Manager,  
PGCPS Capital Programs



**Rodney Howlett**  
AE, Project Manager  
cox graae + spack



**Carlos Flores**  
Project Executive,  
Turner Construction

 Proud Parent!



**Latoya Stephens**  
Project Manager,  
Turner Construction



**Simon Hellyer**  
Project Superintendent,  
Turner Construction



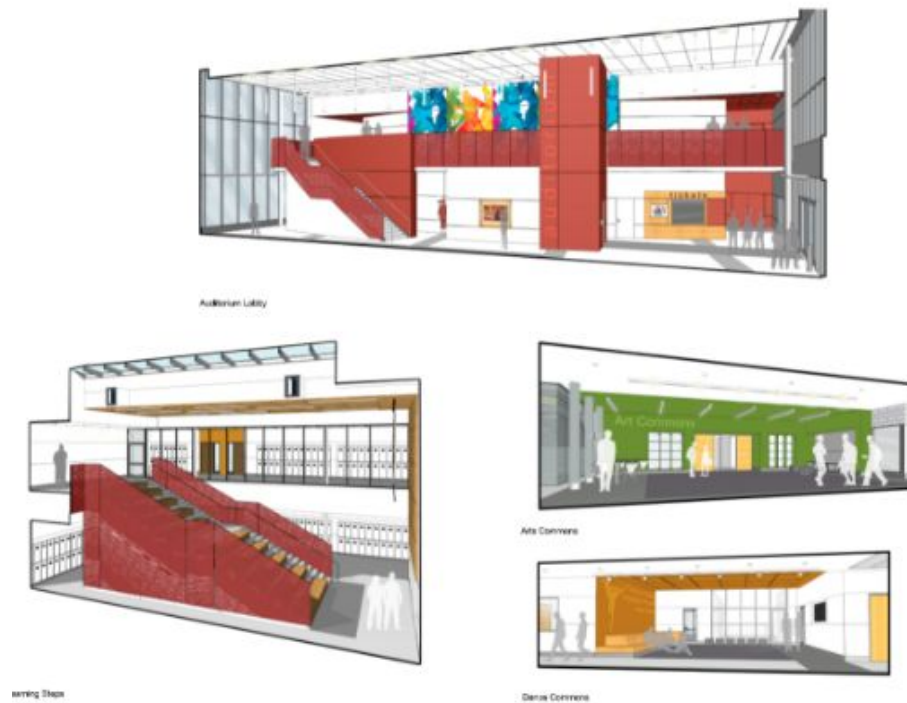
**Frank Johnson**  
Project Engineer  
Turner Construction



**Kyra Tyson**  
Community & Citizenship Manager,  
Turner Construction

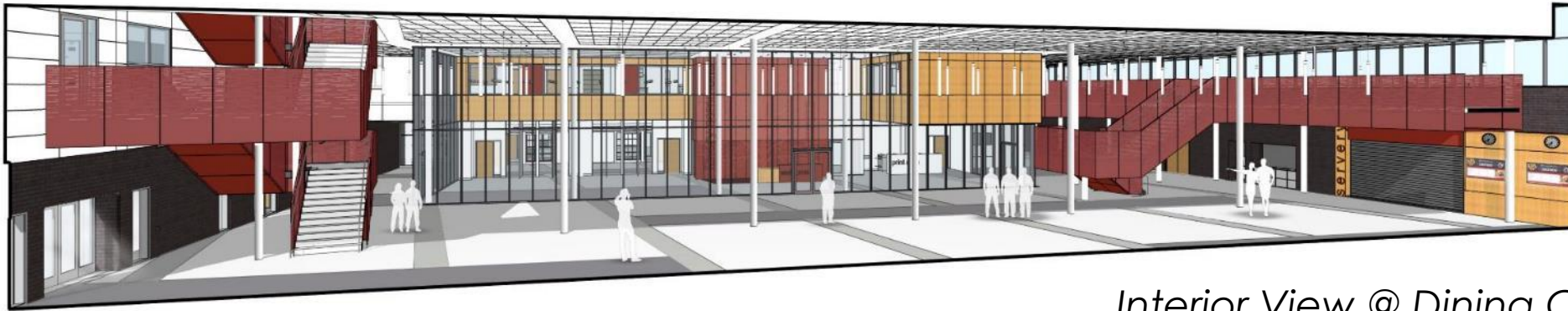


# Project Scope Review

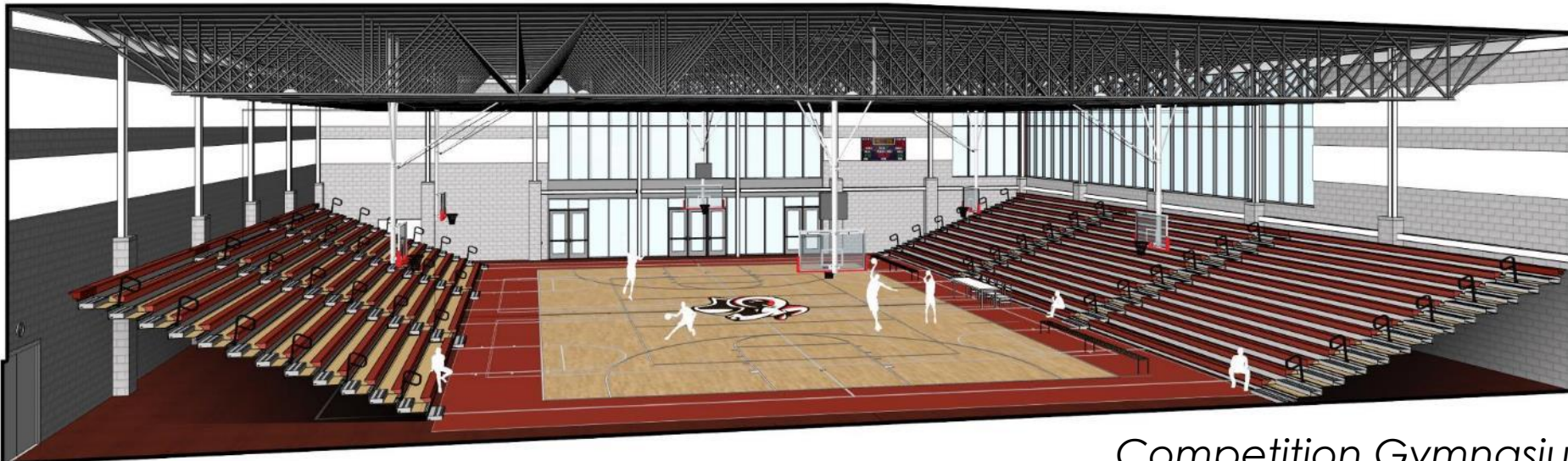


**Full replacement** of the existing 344,875 SF and 2,477 student Suitland High School Campus consisting of Comprehensive High School (CHS), Center for Visual and Performing (CVPA) Arts and Career Technical Education (CTE). **The proposed design is 389,108 sf with a capacity of 1,500 comprehensive and 500 CVPA students.** The new facility will be one new facility with the comprehensive and the CVPA school programs only. The CTE programs will be relocated to Crossland High School for school year 2022 - 2023, which will be designated as the new southern comprehensive CTE school for the county.

# Project Scope Review



*Interior View @ Dining Commons*



*Competition Gymnasium*



# Project Scope Review

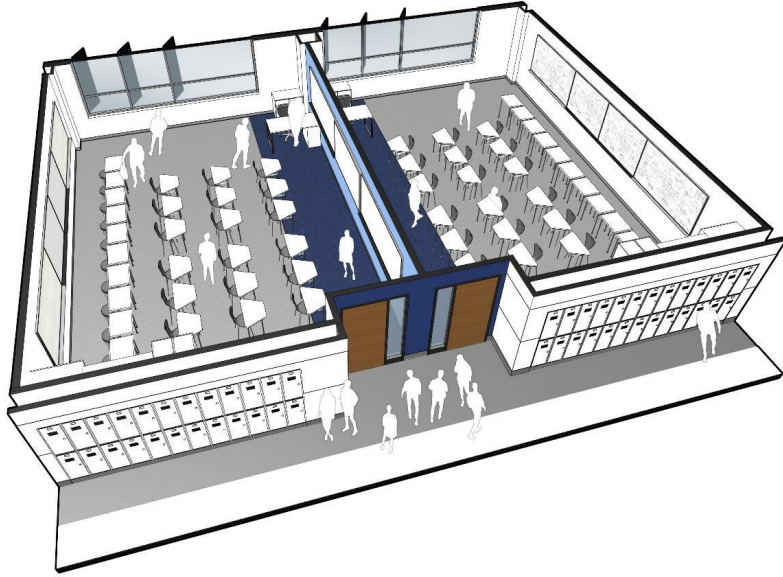


*Media Center*



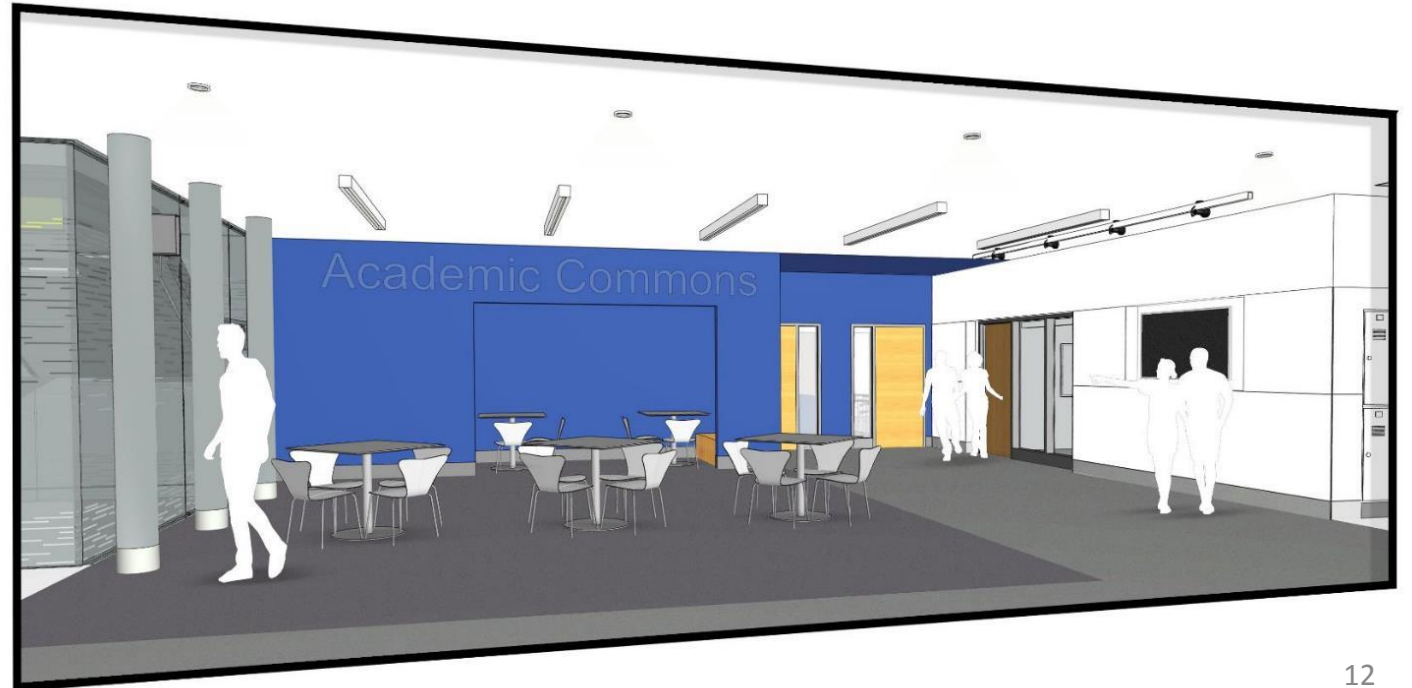
*High School Auditorium Lobby*

# Project Scope Review



*Typical Classrooms*

*Academic Commons*

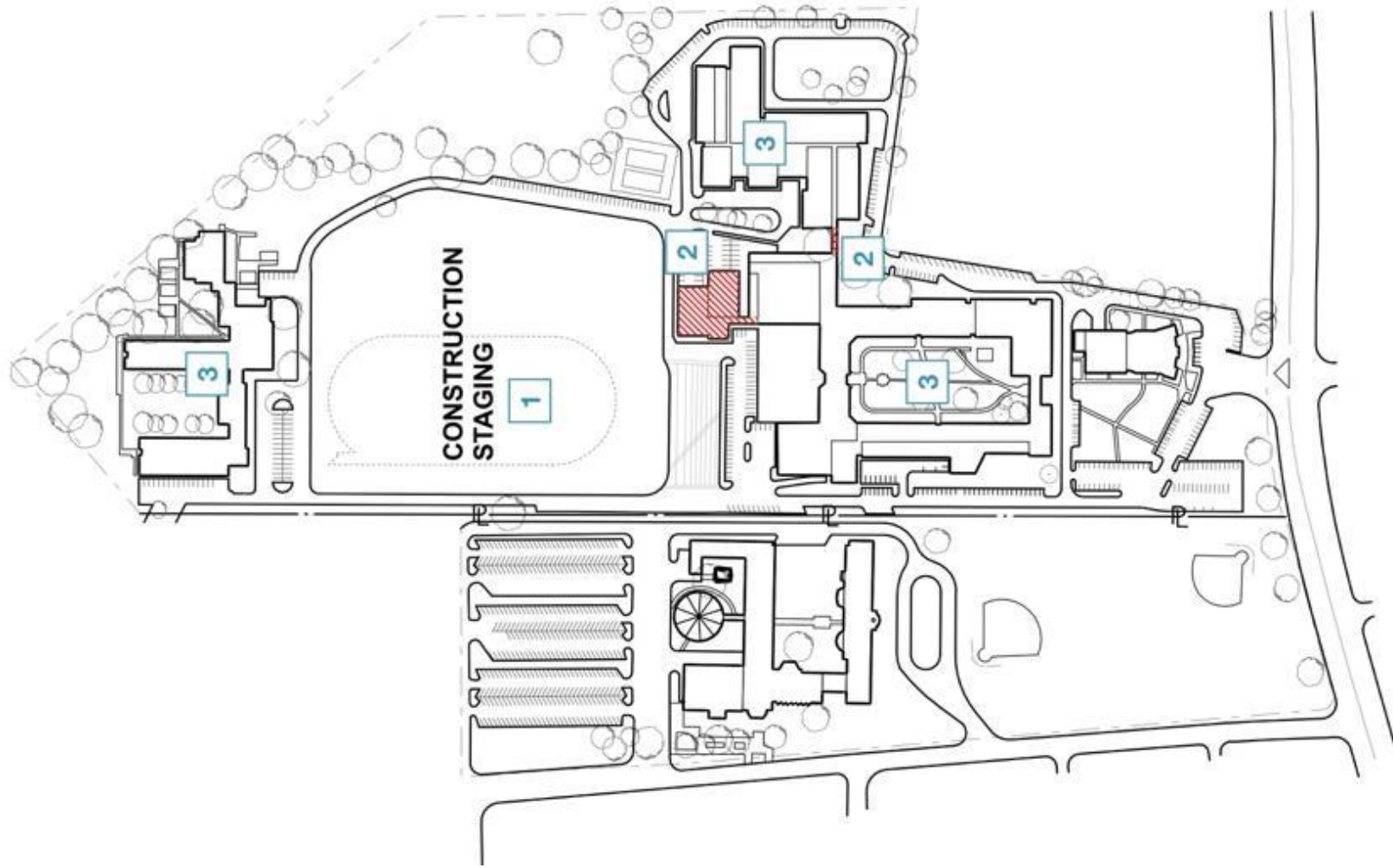




# Project Scope Review



# Project Phasing Review

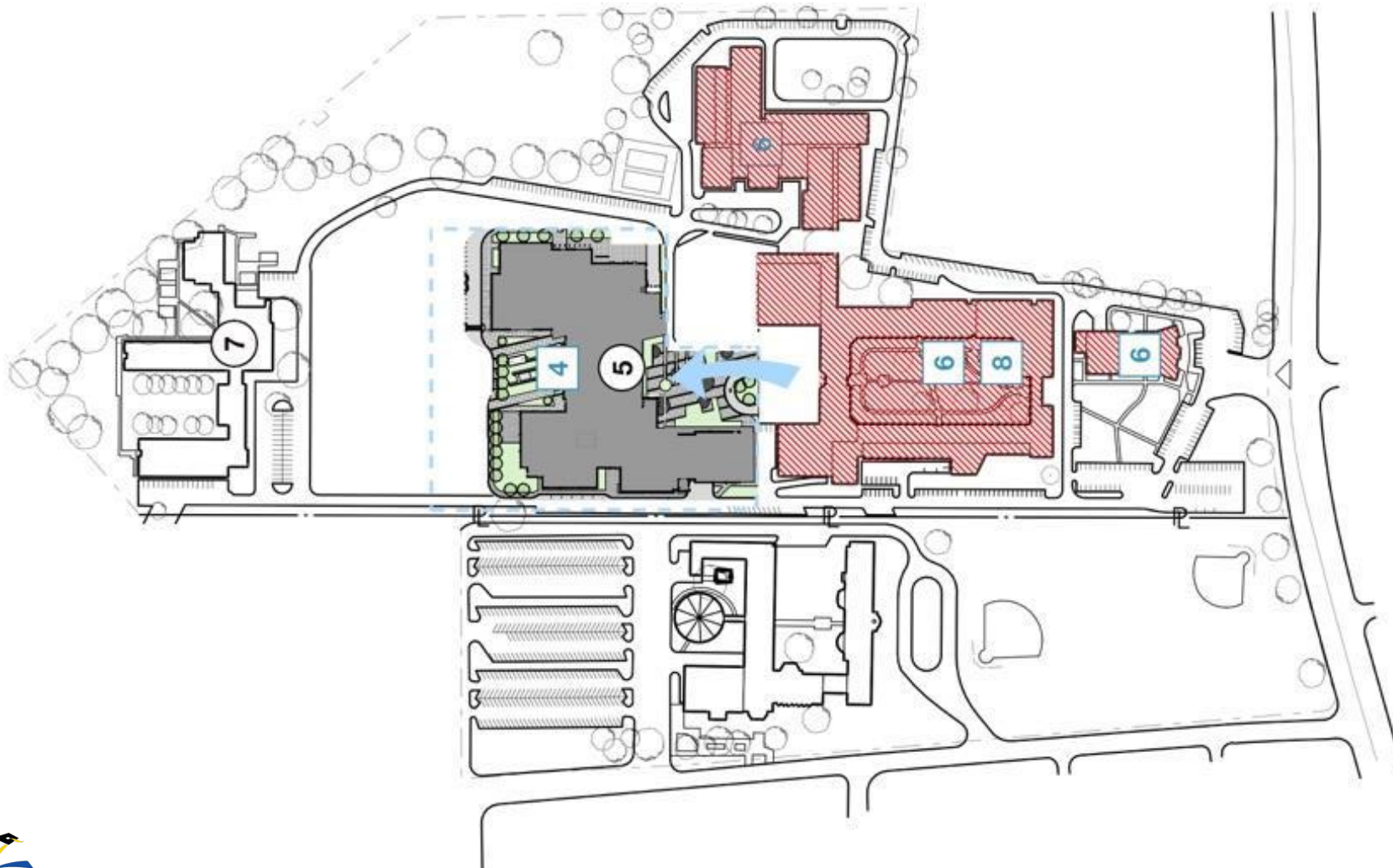


## A PHASE 1

- 1 Enclose construction area
- 2 Demolish stadium, girl's gym and locker rooms & connector between CTE and high school
- 3 Students remain in high school, CTE and Annex building during phase 1 construction



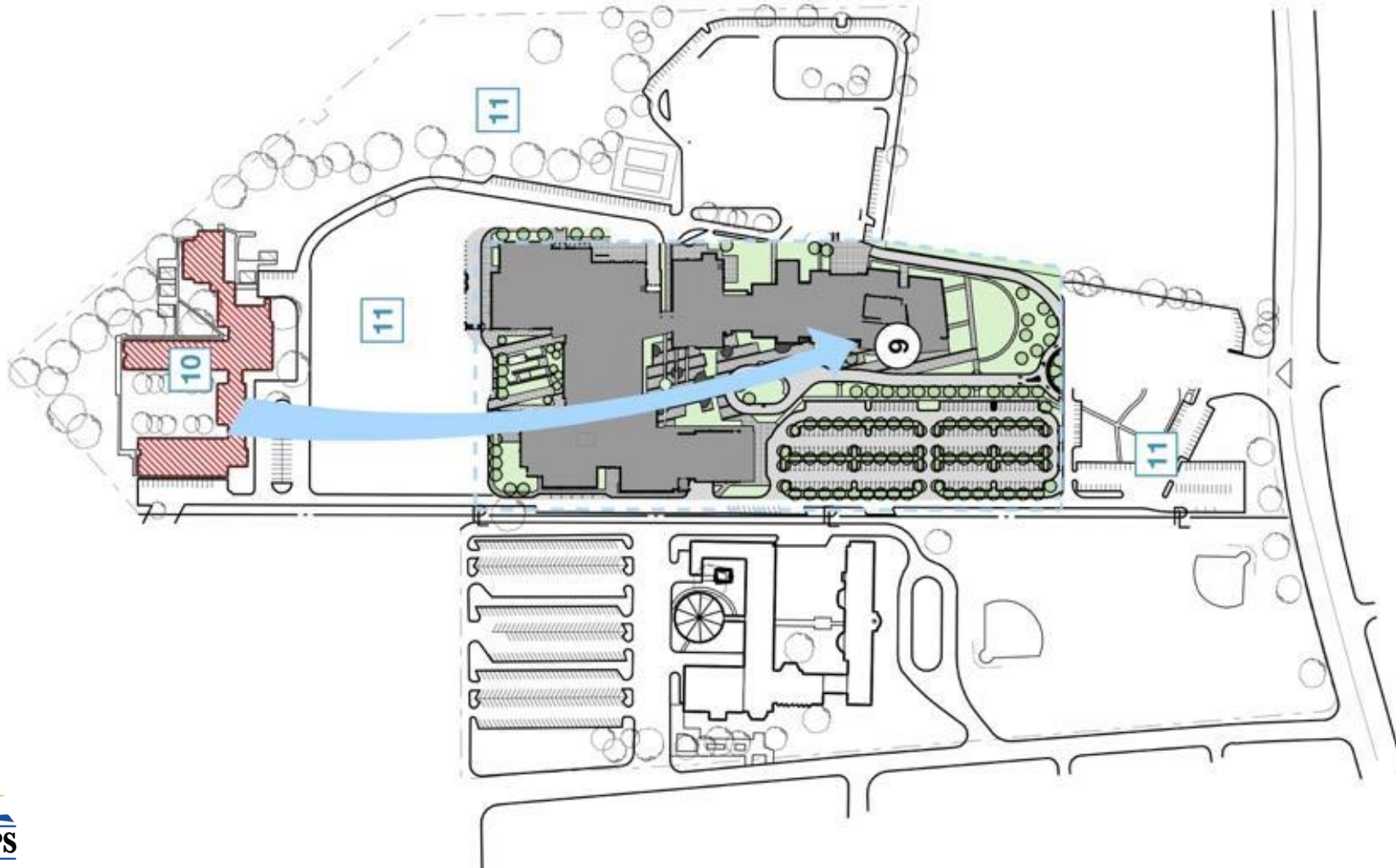
# Project Phasing Review



## **B** PHASE 1 & 2

- 4** New high school and shared spaces building completed
- 5** High school students move out of the existing building into new building
- 6** Existing high school, CTE and auditorium is demolished
- 7** CVPA students remain in the Annex
- 8** New CVPA buildings are constructed

# Project Phasing Review

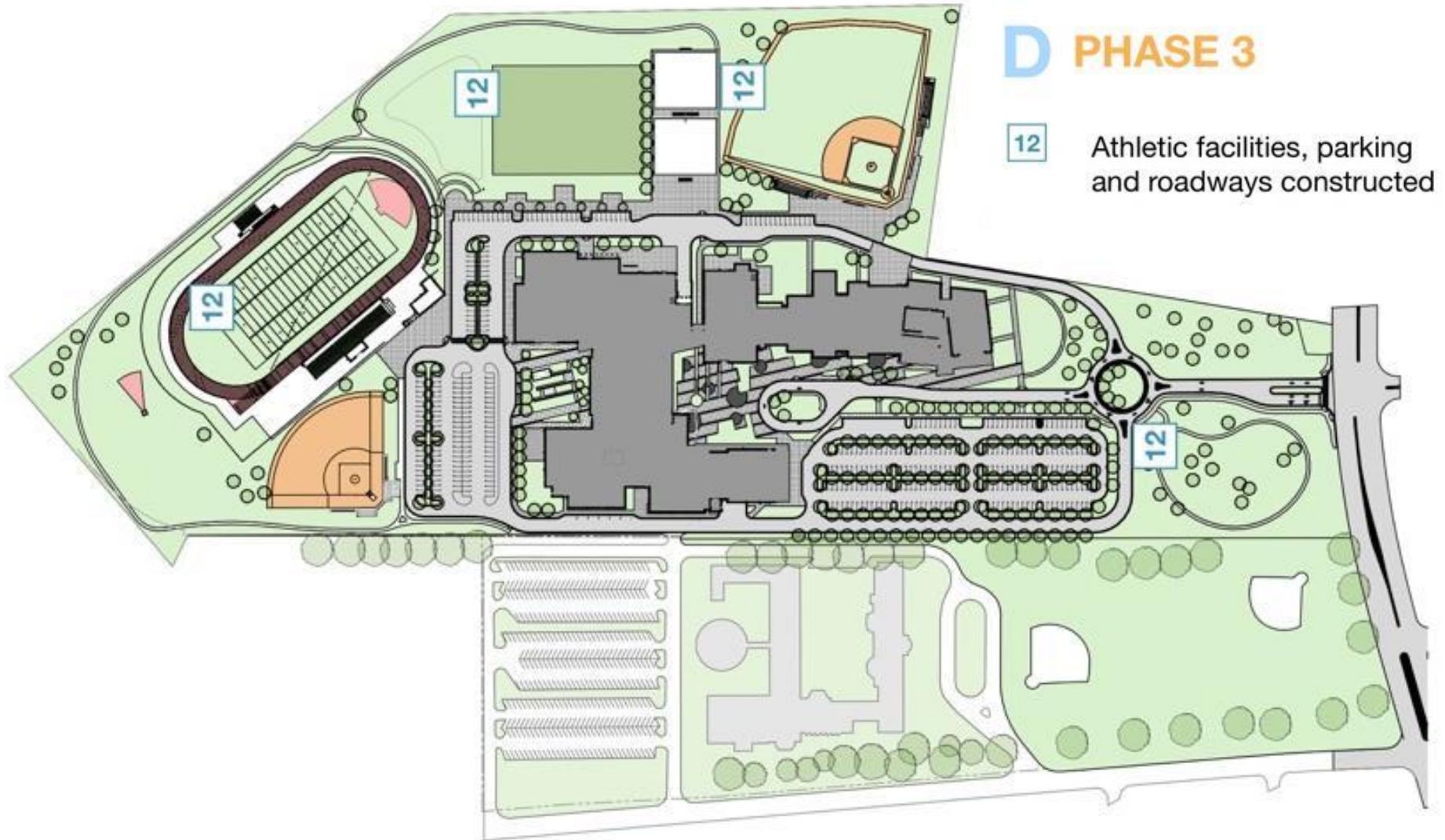


## C PHASE 2 & 3

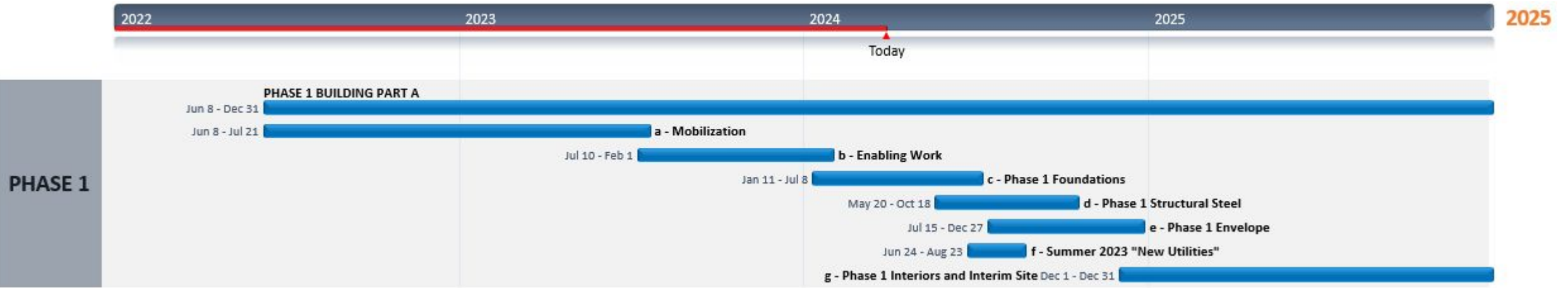
- 9 CVPA students move out of the Annex and into the new facilities
- 10 Annex is demolished
- 11 Remaining site features are removed



# Project Phasing Review



# Project Timeline





# Construction Update

## Foundation - Concrete Footings



Area E and F



Foundations - Concrete Footings



Area D



# Construction Update

## Foundation Orchestra



*Foundation - Orchestra Mud Slab  
Foundation Orchestra Pit*



*Foundation Orchestra Pit Wall Framing*



*Elevator Pit and Stair 2 Footing*



# Construction Update

## Underground Mechanical Electrical and Plumbing



*Incoming Electrical Duct Bank*



*Underground MEP*



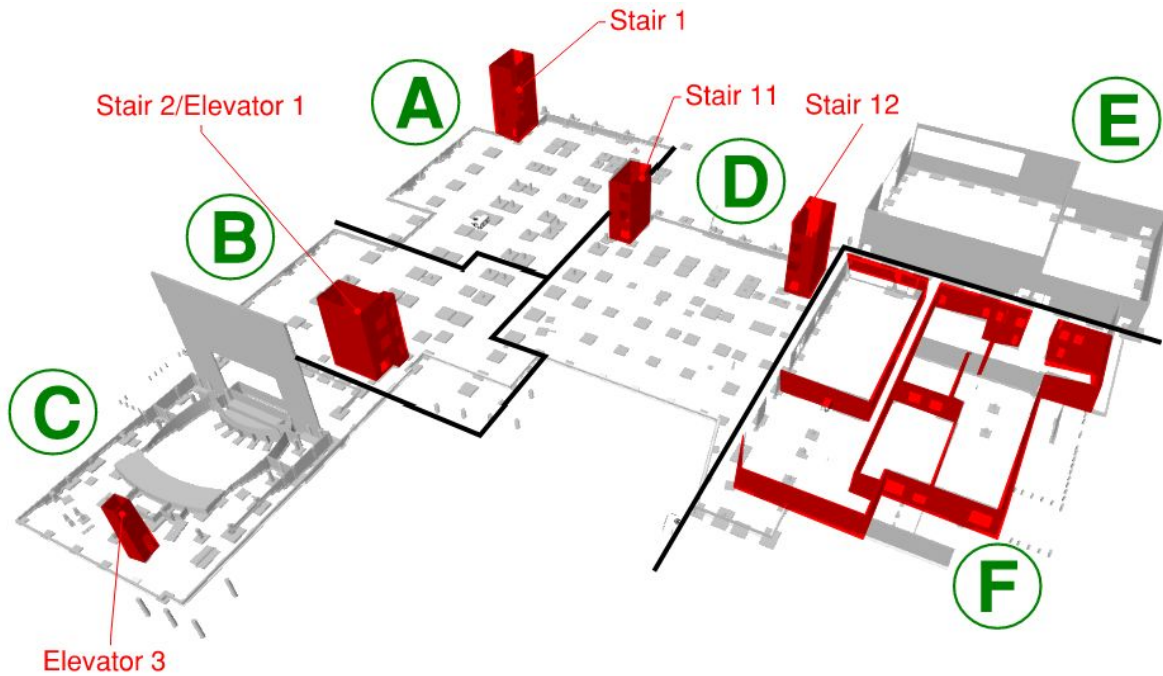
*Prep for Concrete Slab*



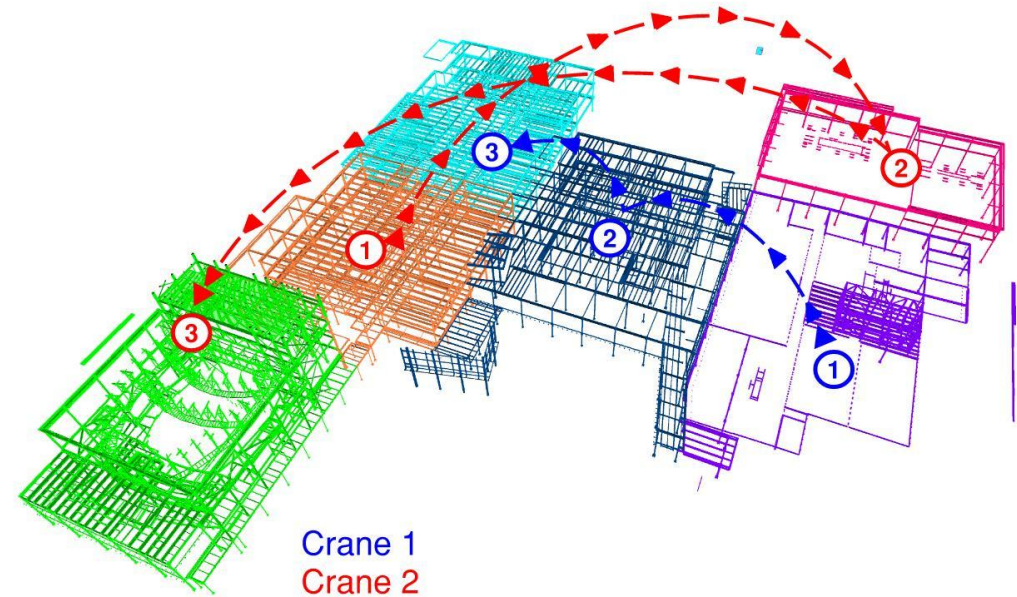
# Construction Update

## Next Steps

### CMU Stair Towers and Elevator Shafts



### Structural Steel



# Construction Update

Major Completed Work	Work in Progress	Next Steps
Building Pad	Foundation Footings In Area A, B and C	Structural Masonry at Stairs and Elevators.
Concrete Footing in Area D, E and F	Concrete Slab on Grade	Structural Steel
Deep Underground Mechanical and Electrical Work Area D, E and F	Shallow Mechanical and Electrical Work lab on Grade	Concrete Slab on Grade
Pepco Installed Temporary Power to Transformer	Waterproofing of Masonry and Concrete Walls	Exterior backfill to subgrade
	Concrete Footing in Area A, B and C	



# Communications & Engagement



## Communications

- Community Meetings: Spring and Fall
- Construction Notifications
- On-site Time Lapse Videos
- Capital Programs Newsletter

## Community Engagement

- Student Engagement Opportunities
- Groundbreaking and Topping Out
- Community and Dignitary Tours
- Alumni Outreach and Programming



# Q&A

- Please type your questions/comments in the Q&A area of Zoom.
- Questions and answers from this town hall will be posted on the Suitland HS project page at [www.pgcps.org/offices/capital-programs](http://www.pgcps.org/offices/capital-programs).
- If you have additional questions, please email them to [capital.programs@pgcps.org](mailto:capital.programs@pgcps.org).





# Thank You!

To submit additional questions and to view today's presentation, visit the project webpage at [bit.ly/DCP-Suitland](https://bit.ly/DCP-Suitland).

To receive the Department's news and updates, join the mailing list at [bit.ly/DCP-Mailing](https://bit.ly/DCP-Mailing) or scan the QR code below.

