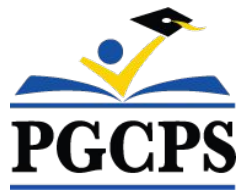




PGCPS . **ENGAGE . DESIGN . BUILD . COMMUNICATE** . PGCPS

SUITLAND HIGH SCHOOL

PROJECT UPDATE MEETING | OCTOBER 25th, 6:30 PM



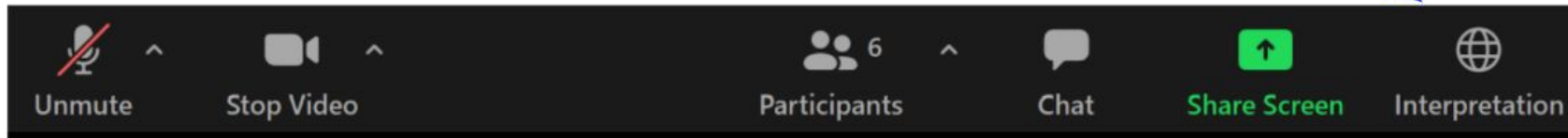
**DEPARTMENT OF
CAPITAL PROGRAMS**
PRINCE GEORGE'S COUNTY PUBLIC SCHOOLS



SERVICIOS DE INTERPRETACIÓN

INTERPRETING SERVICES

La interpretación simultánea
está disponible en español.
*Simultaneous interpretation is
available in Spanish.*



SERVICIOS DE INTERPRETACIÓN

INTERPRETING SERVICES



On a computer-- At the bottom of the screen will be an interpretation globe. Click that globe and then select *Spanish*.

En una computadora-- En la parte baja de la pantalla habrá un globo de interpretación. Haga clic en ese globo y seleccione "Spanish."



On a mobile device-- At the bottom of the screen, tap the ellipses icon on the bottom right (...).

- Tap *Language Interpretation*.
- Tap *Spanish*.

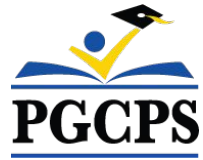
En un dispositivo móvil-- En la parte baja de la pantalla, toca el icono de elipses en la parte baja derecha (...).

- Toque *Language Interpretation*.
- Toque *Spanish*.



We value your input.

- Please type your questions/comments in the Q&A area of Zoom.
- Questions and answers from this town hall will be posted at www.pgcps.org/cip.



Our Commitment

PGCPS is moving swiftly to deliver safe, state-of-the-art, and sustainable learning environments for our students, teachers, and communities.

Through a three-pronged approach, traditional Capital Improvement, Staged Renovations, and the nation's first Public School P3 Design-Build-Maintain approach, otherwise known as the Blueprint Schools Program, we're on track to deliver over 25 modernized school facilities in just 10 years.

Agenda

- Team Introductions
- Project Scope Review
- Project Phasing Review
- Project Timeline
- Construction Update
- Community Engagement
- Q&A

Team Introductions



Jason Washington
Associate Superintendent of
Supporting Services



Shawn Matlock
Director
Department of Capital Programs

Team Introductions

 Proud Alum!



Will Smith
Project Management Supervisor,
PGCPS Capital Programs

 Proud Alum!



Sean Nickols
Project Manager,
PGCPS Capital Programs



Rodney Howlett
AE, Project Manager
cox graae + spack



Brunson Cooper
Corenic Construction,
President



Carlos Flores
Project Executive,
Turner Construction

 Proud Parent!



Latoya Stephens
Project Manager,
Turner Construction



Simon Hellyer
Project Superintendent,
Turner Construction



Frank Johnson
Project Engineer
Turner Construction



Kyra Tyson
Community & Citizenship Manager,
Turner Construction

Project Scope Review

Full replacement of the existing 344,875 SF and 2,477 student Suitland High School Campus consisting of Comprehensive High School (CHS), Center for Visual and Performing (CVPA) Arts and Career Technical Education (CTE). **The proposed design is 389,108 sf with a capacity of 1,500 comprehensive and 500 CVPA students.** The new facility will be one new facility with the comprehensive and the CVPA school programs only. The CTE programs will be relocated to Crossland High School for school year 2022 - 2023, which will be designated as the new southern comprehensive CTE school for the county.



Auditorium Lobby



Library

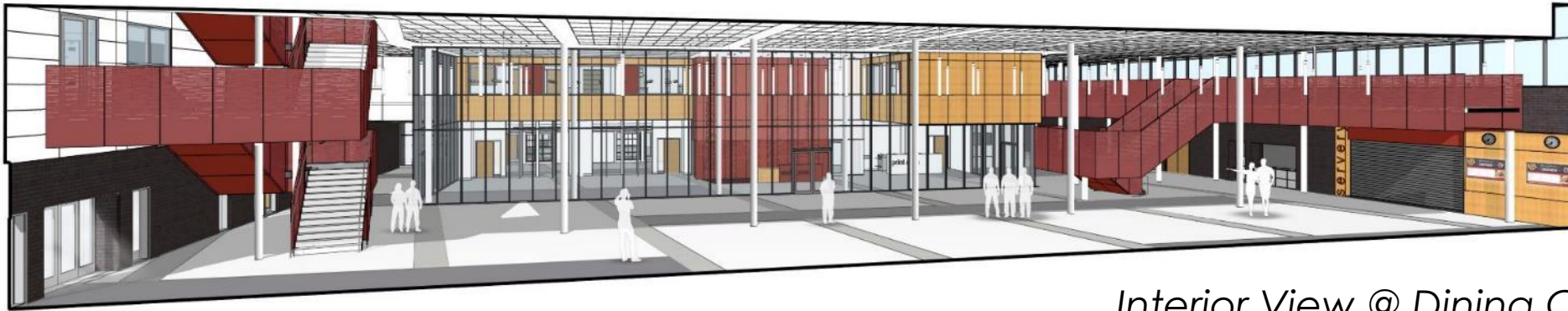


Arts Commons

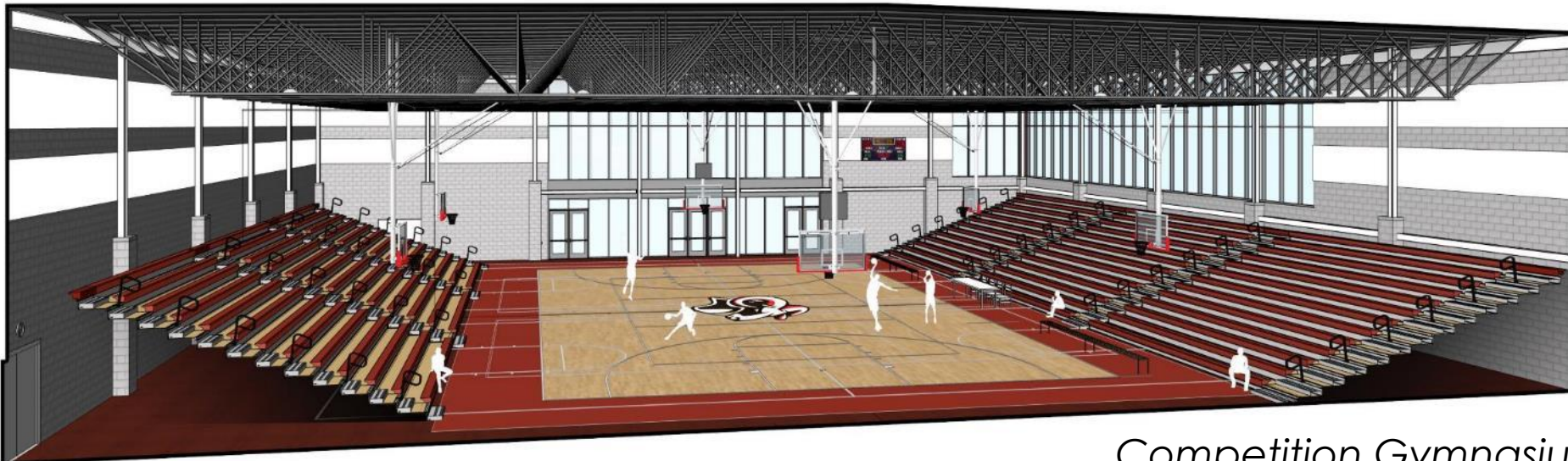


Dance Commons

Project Scope Review



Interior View @ Dining Commons



Competition Gymnasium

Project Scope Review

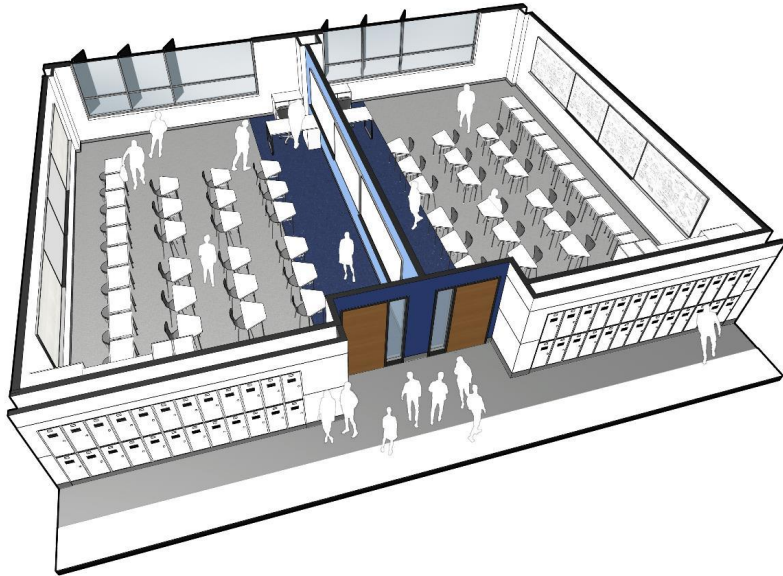


Media Center



High School Auditorium Lobby

Project Scope Review



Typical Classrooms

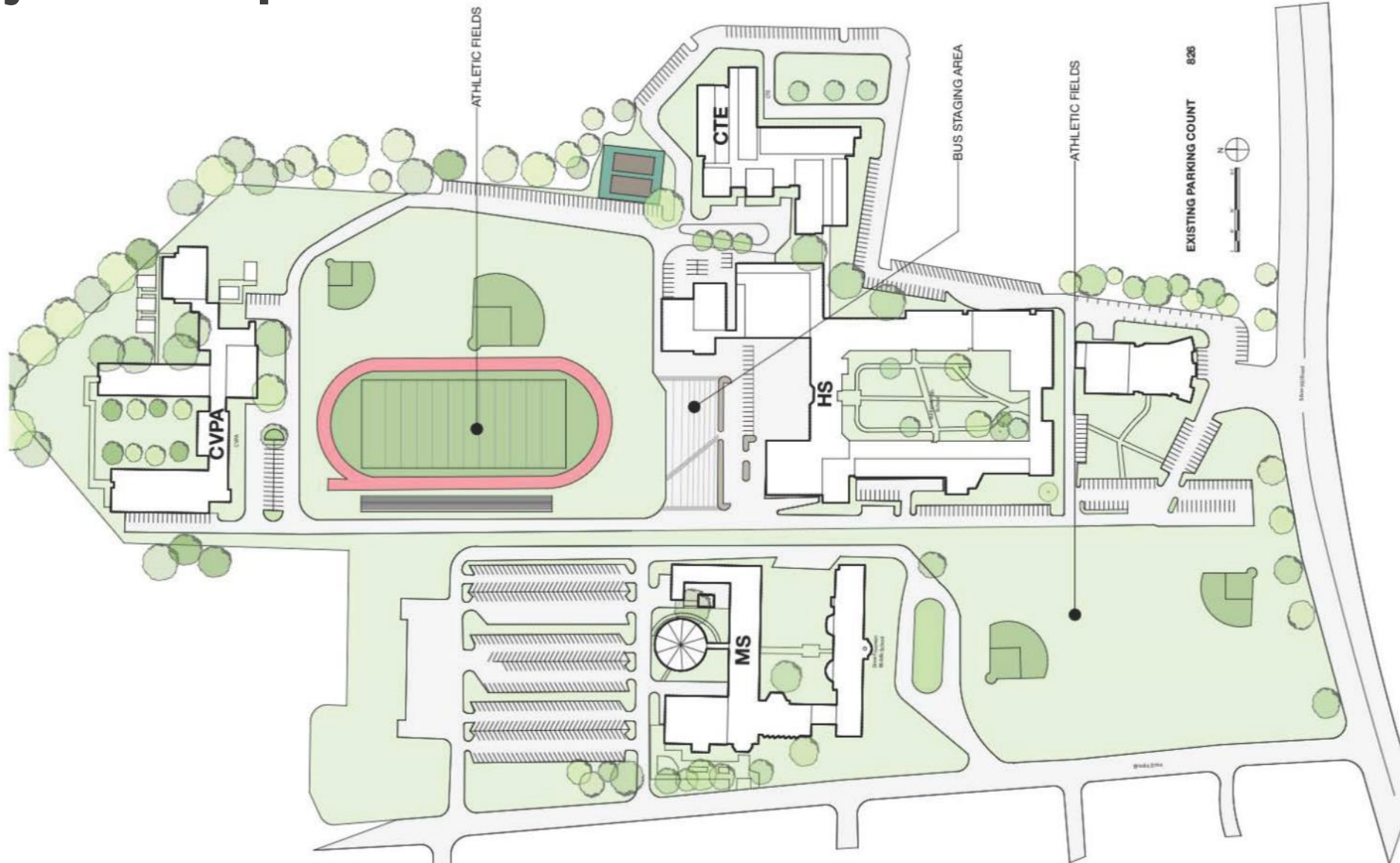
Academic Commons



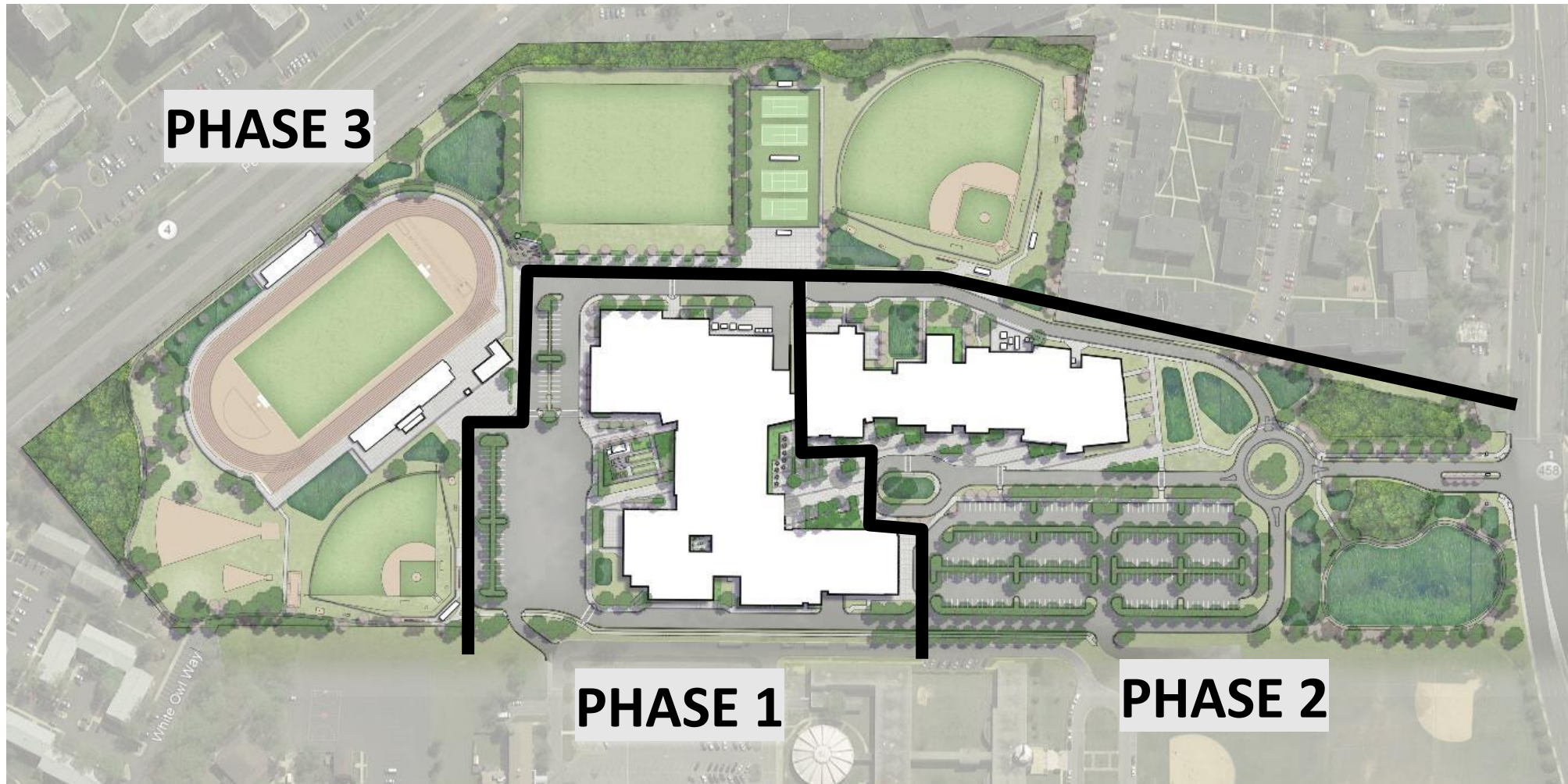
Project Scope Review



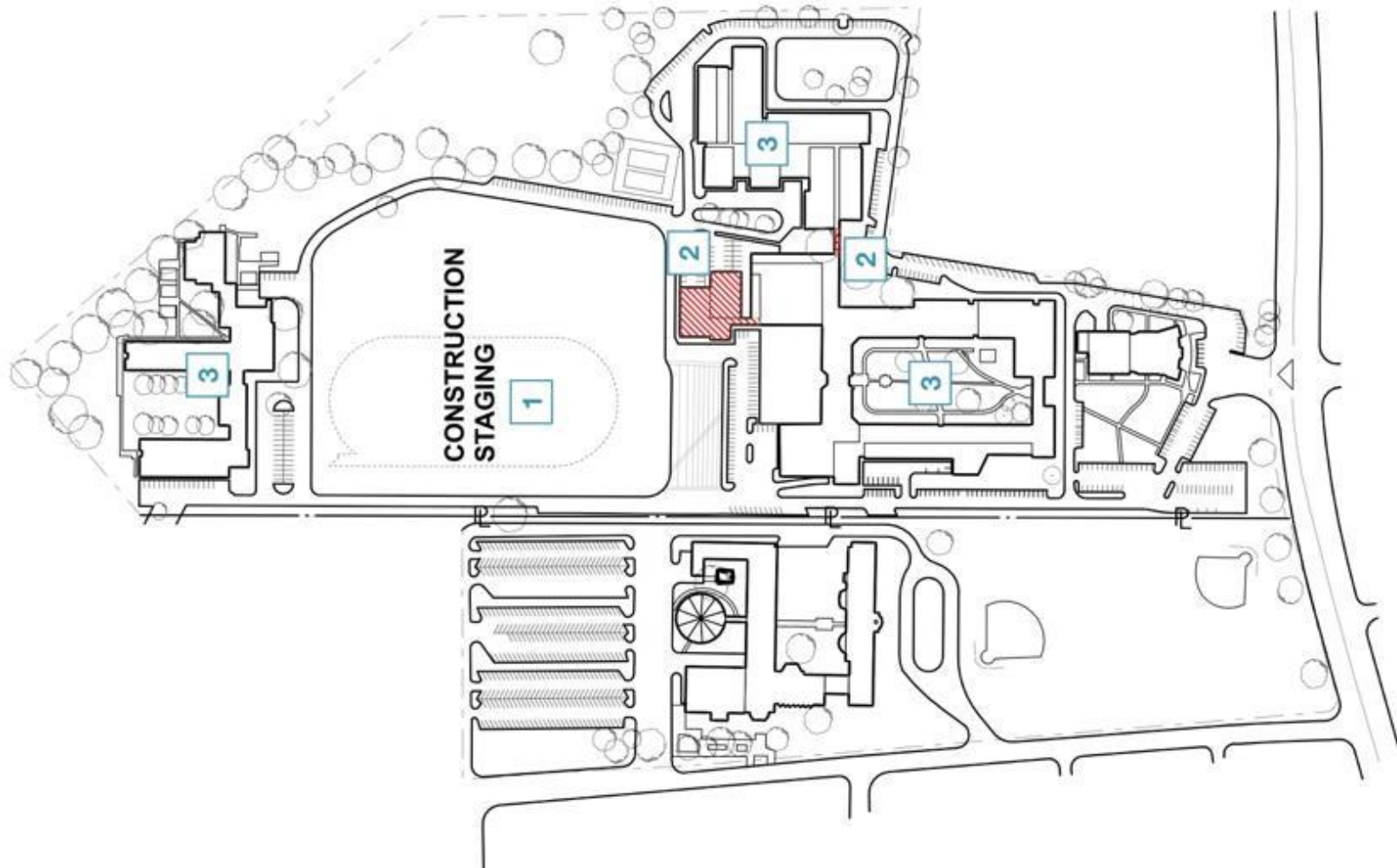
Project Scope Review



Project Scope Review



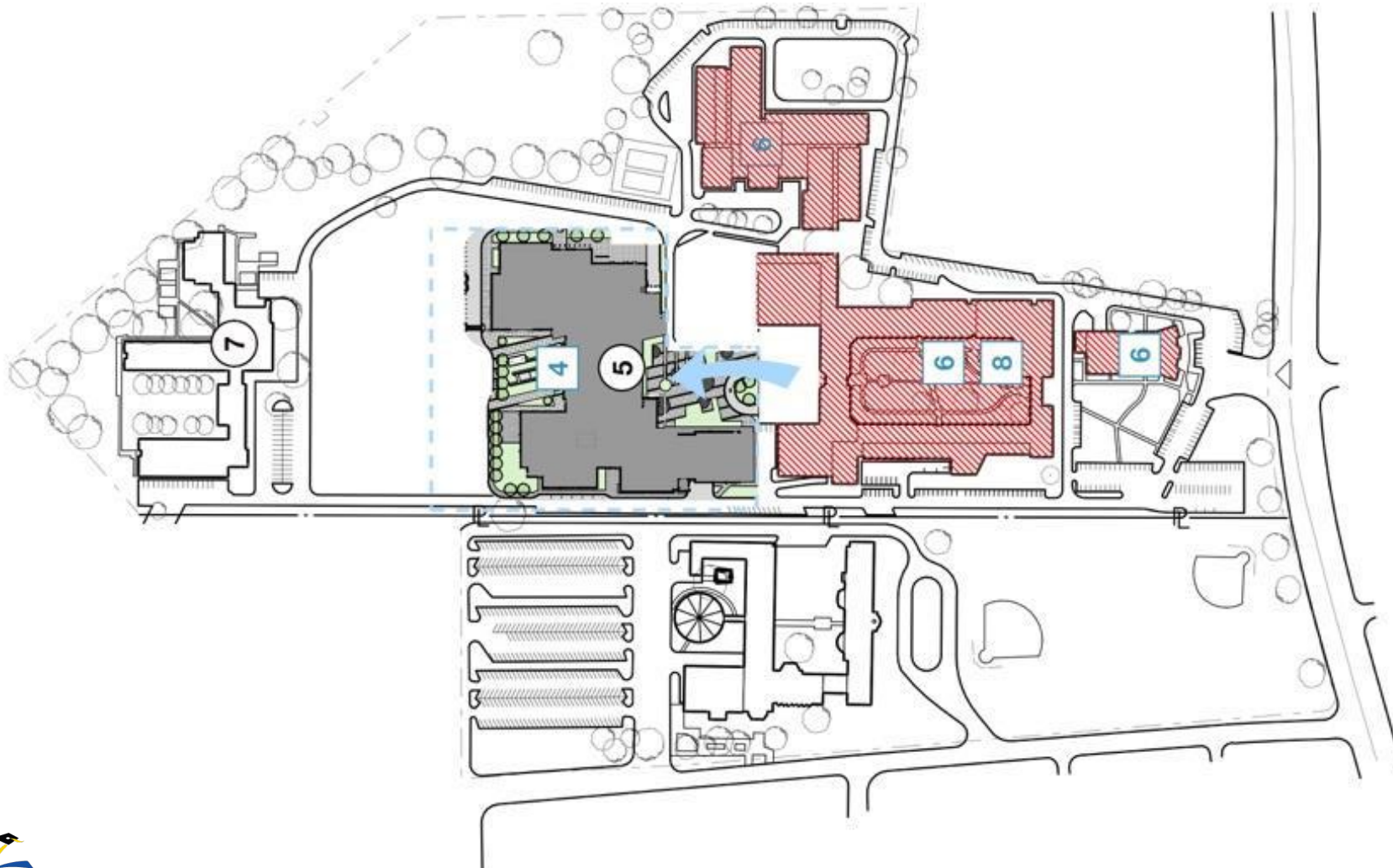
Project Phasing Review



A PHASE 1

- 1 Enclose construction area
- 2 Demolish stadium, girl's gym and locker rooms & connector between CTE and high school
- 3 Students remain in high school, CTE and Annex building during phase 1 construction

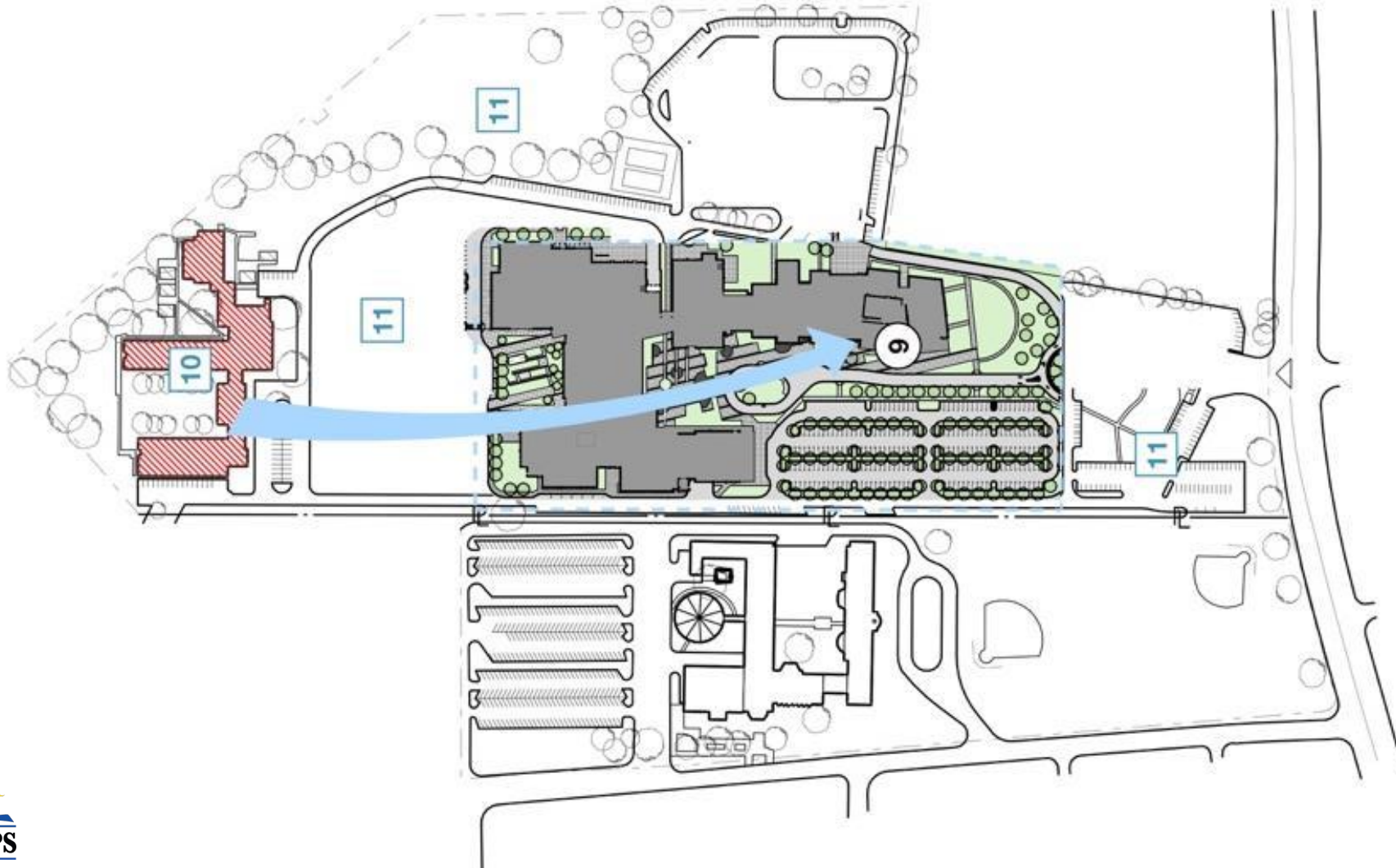
Project Phasing Review



B PHASE 1 & 2

- 4** New high school and shared spaces building completed
- 5** High school students move out of the existing building into new building
- 6** Existing high school, CTE and auditorium is demolished
- 7** CVPA students remain in the Annex
- 8** New CVPA buildings are constructed

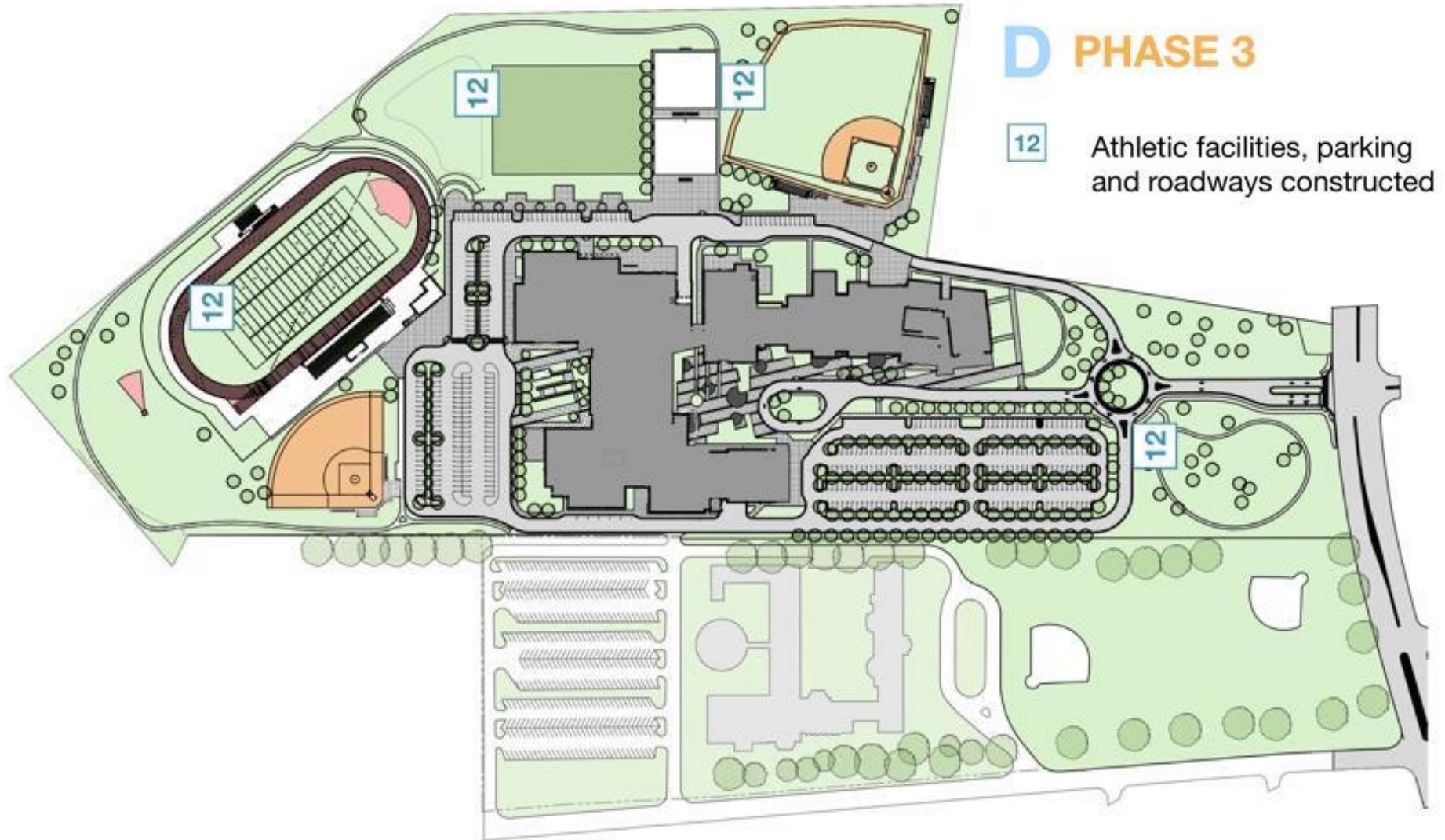
Project Phasing Review



C PHASE 2 & 3

- 9 CVPA students move out of the Annex and into the new facilities
- 10 Annex is demolished
- 11 Remaining site features are removed

Project Phasing Review



Project Timeline



Construction Update

Sediment and Erosion Control Earthwork

Estimated Completion Date: End of November 2023



Construction Update

Sediment and Erosion Control Earthwork



BEFORE



AFTER

Construction Update

Sediment and Erosion Control Storm Piping

Estimated Completion Date: End of November 2023



Construction Update

Sediment and Erosion Control Storm Piping



Installation of storm piping from RS-2 to I-149



Setting of RS-2

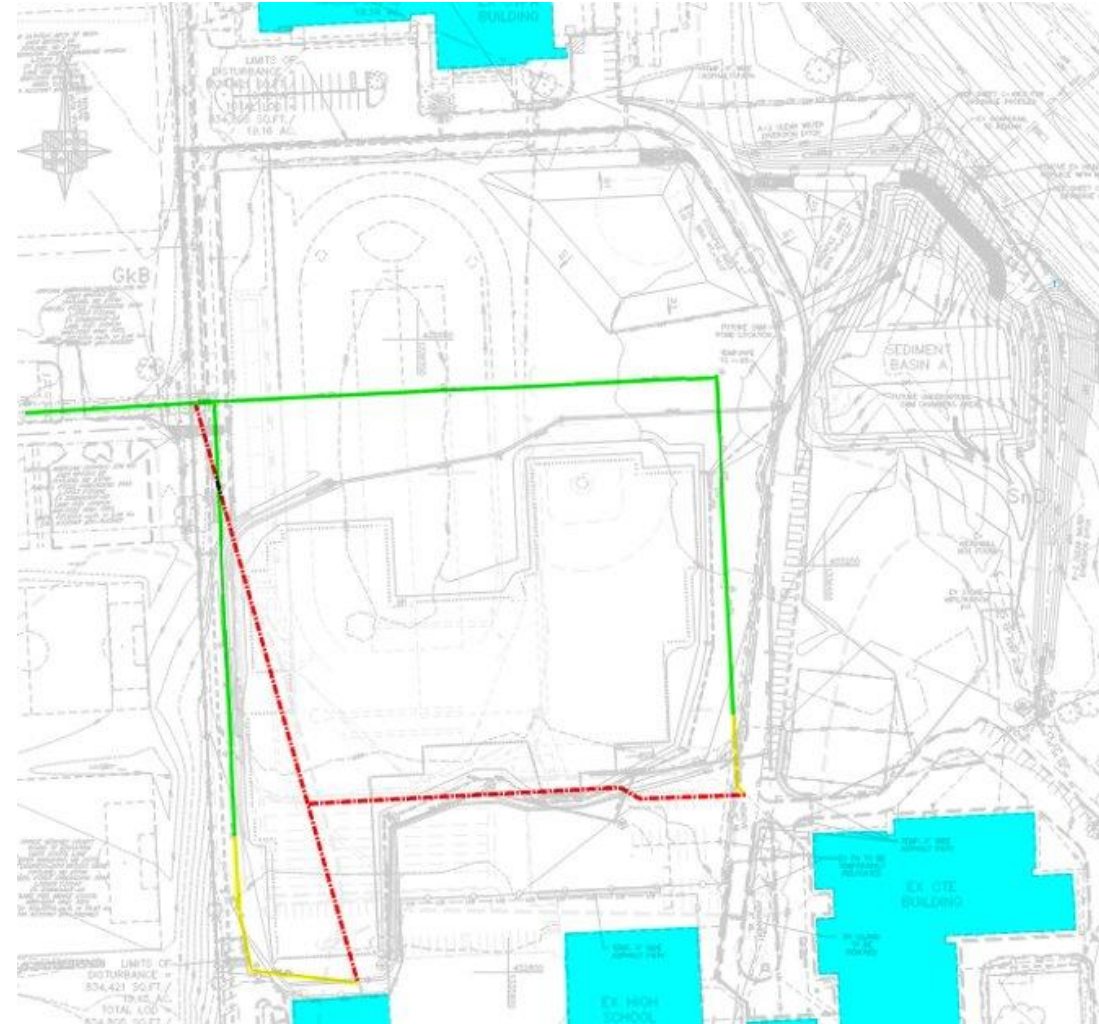


Installation of the middle base of manhole (MH) 96

Construction Update

Sanitary Line Relocation

Estimated Completion Date: End of November 2023



Construction Update

Sanitary Line Relocation



Pipe connection from MH 1 to MH 2.



Soil compaction from manhole (MH) 2 to the middle of the west connector road.



Excavation work near MH 3.

Construction Update

Water Line Relocation

Estimated Completion Date: End of November 2023



Construction Update



Installation of new hydrant



Soil compaction on top of the water line.

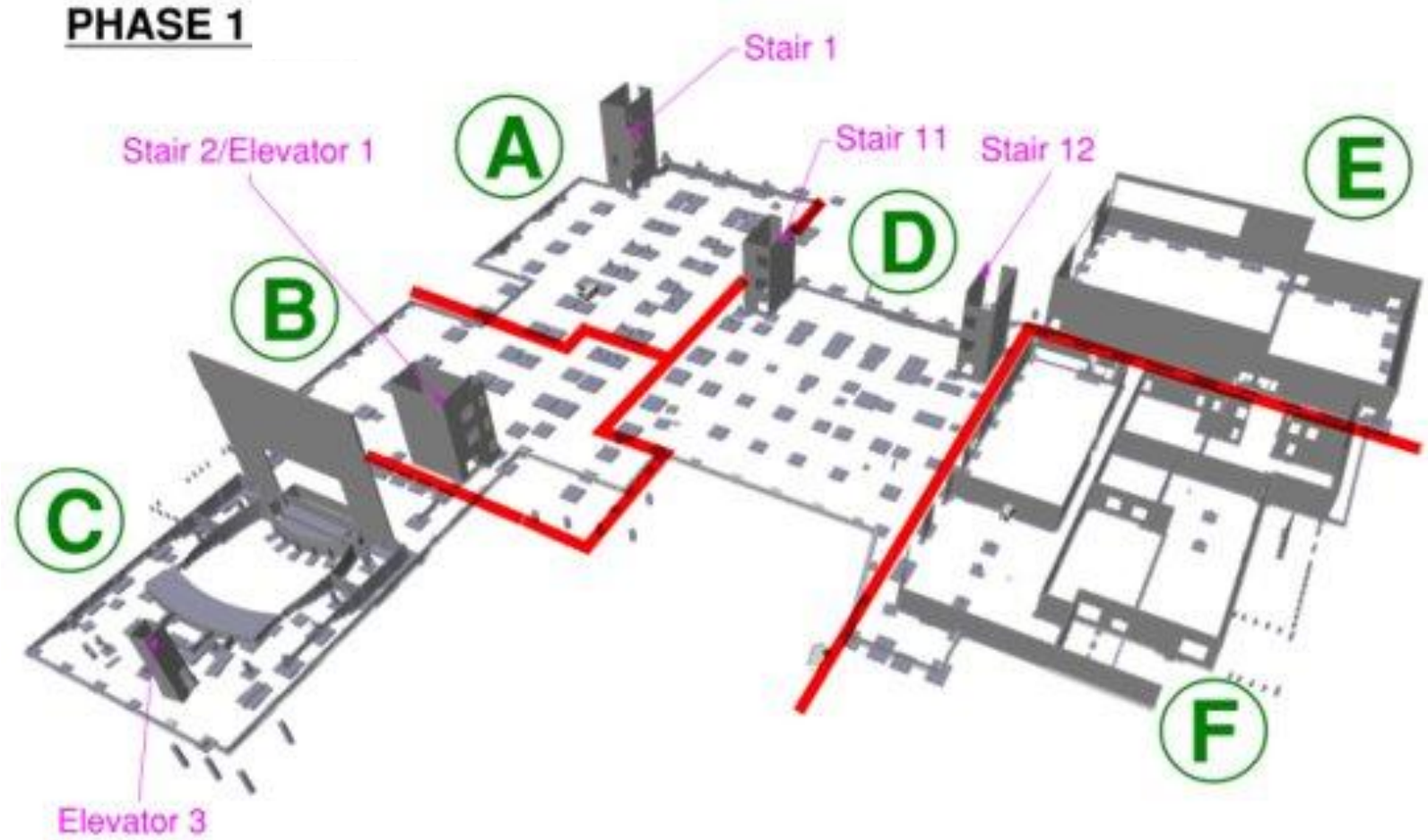


Water line tie-in to existing

Construction Update

Next Steps

- Foundation Footing
- Underground Mechanical, Electrical, and Plumbing
- CMU Stair Towers and Elevator Shafts



Construction Update

Major Completed Work	Work in Progress	Next Steps
Imani Temple Sanitary Line	Sanitary Relocation within Building Footprint	Fine Grade Permit
Temp Fence and Screen	Relocation of Water Lines	Building Pad Installation
Sediment Basin A		Foundation Installation
Delivery of Boilers, Chiller, Partial AHU		Mechanical, Electrical and Plumbing to support foundation work
Release of Switchgear		Masonry work for foundation and stair towers

Communications & Engagement



Communications

- Community Meetings: Spring and Fall
- Construction Notifications
- On-site Time Lapse Videos
- Capital Programs Newsletter

Community Engagement

- Subcontractor Outreach
- Student Engagement Opportunities
- Groundbreaking and Topping Out
- Community and Dignitary Tours
- Alumni Outreach and Programming

Communications & Engagement

Recent Activities

- Suitland High School Community The Greater 202 Coalition Meeting and QA with Senator Benson.
- Student Design Fence Installation Update

Upcoming Activities

- Subcontractor Outreach - January 2024
- Quarterly Newsletter for Project Updates



Q&A

- Please type your questions/comments in the Q&A area of Zoom.
- Questions and answers from this town hall will be posted on the Suitland HS project page at www.pgcps.org/cip.
- If you have additional questions, please email them to capital.programs@pgcps.org.



Thank You!

To submit additional questions and to view today's presentation, visit www.pgcps.org/cip.