



The new **William Wirt Middle School**

Design and Construction Update Town Hall
Wednesday, December 8, 2021 6:00-7:00pm



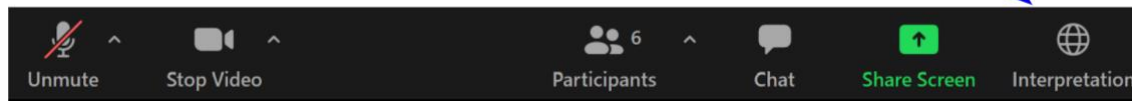


Interpretation and Translation

Karen Summerville,
Communications & Engagement

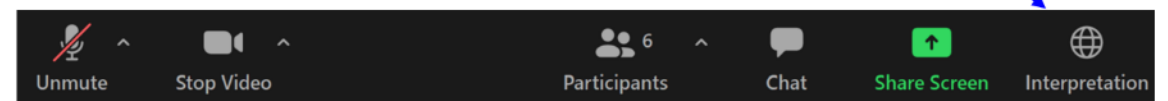
SERVICIOS DE INTERPRETACIÓN *INTERPRETING SERVICES*

La interpretación simultánea
está disponible en español.
*Simultaneous interpretation is
available in Spanish.*



INTERPRETING SERVICES SERVICES D'INTERPRÉTATION

*Simultaneous interpretation is
available in French.*
Une interprétation simultanée
est disponible en français.





SERVICIOS DE INTERPRETACIÓN

INTERPRETING SERVICES



On a computer-- At the bottom of the screen will be an interpretation globe. Click that globe and then select *Spanish*.

En una computadora-- En la parte baja de la pantalla habrá un globo de interpretación. Haga clic en ese globo y seleccione "Spanish."



On a mobile device-- At the bottom of the screen, tap the ellipses icon on the bottom right (...).

- Tap *Language Interpretation*.
- Tap *Spanish*.

En un dispositivo móvil-- En la parte baja de la pantalla, toca el icono de elipses en la parte baja derecha (...).

- Toque *Language Interpretation*.
- Toque *Spanish*.



SERVICES D'INTERPRÉTATION

INTERPRETING SERVICES



On a computer-- At the bottom of the screen will be an interpretation globe. Click that globe and then select *French*.

Sur un ordinateur--Au bas de l'écran se trouve un globe d'interprétation. Cliquez sur ce globe et sélectionnez *French (français)*



On a mobile device-- At the bottom of the screen, tap the ellipses icon on the bottom right (...).

- Tap *Language Interpretation*.
- Tap *French*.

Sur un appareil portable-- Au bas de l'écran, touchez l'icône des ellipses en bas à droite (...).

- Appuyez sur *Language Interpretation (Interprétation)*.
- Touchez *French (français)*

Welcome: William Wirt Middle School *Home of the Mighty Jaguars*



Rhonda Simley,
Principal of William Wirt
Middle School



The Honorable
Dannielle Glaros,
County Council
Member





Meeting Logistics



We value your input.

- Please submit all questions/concerns in the Q&A area of Zoom.
- Questions and answers from this town hall will be posted on PGCPS Capital Programs William Wirt project profile page.



Team Introductions



Will Smith

Project Management Supervisor, PGCP
Department of Capital Programs



Henry M. Lewis

Senior Project Manager, PGCP
Department of Capital Programs



Seth Wentz

Architect: Crabtree, Rohrbaugh
& Associates Architects



Justin Short

Construction Manager:
Keller Brothers



Tom Hamilton

Construction Manager:
Keller Brothers



Program Overview: **Agenda**



- **Team Introductions:** Will Smith
- **Project Overview and Design:** Seth Wentz
- **Construction Activity:** Justin Short
- **Communication and Engagement:** Henry Lewis
- **Q&A:** Will Smith



Project Overview: Scope



Scope: Demolition of the existing 106,318 SF facility built in 1964 with a State Rated Capacity (SRC) of 850 students and replacement with a **new 170,900 SF facility** with a SRC of **1,200 students** at the same site.



Project Overview: The Site



The Site

- New athletic fields
- Lighted walking trail
- New entry to site off Norman Ave
- Separate drop-off areas for parents and buses
- Outdoor educational environments
- Accessible sidewalk access
- Access to Brier Mill Run for educational opportunities



Project Overview: The Building



The Building

- 3-story educational wing for grade level instruction
- Grade levels organized into 'neighborhoods'
- Collaborative learning areas
- First floor Community-Use Space
- Large light-filled cafeteria with performance stage
- Large natural lit gymnasium
- Fitness lab w/ classroom space adjacent to dance studio
- Band and chorus rooms near performance space
- 2nd floor media center w/ instructional space, breakout-rooms, and access to outdoor terrace, STEAM areas
- 3rd floor STEAM and Arts suite w/ access to second outdoor terrace
- Building-wide security features



Project Overview: Design





MAIN ENTRY / GYMNASIUM - VIEW FROM SOUTHWEST



CLASSROOM WING - VIEW FROM NORTHEAST REAR



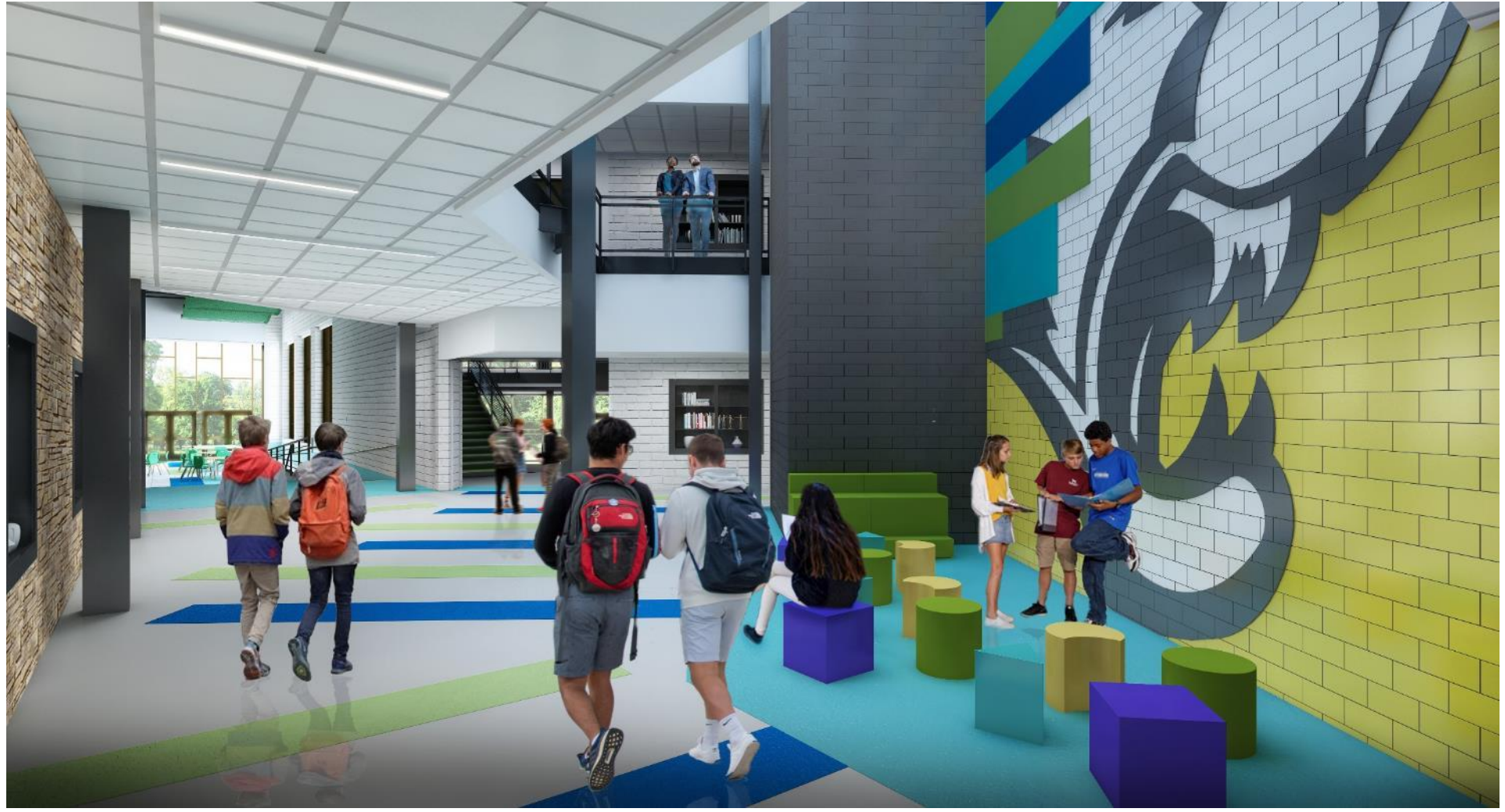
MAIN ENTRY / CLASSROOM WING - VIEW FROM SOUTHEAST



REAR ENTRY / CAFETERIA - VIEW FROM NORTH



Project Overview: Design





Project Overview: Design



CAFETERIA



TYPICAL CLASSROOM



COLLABORATION



LOBBY - 2ND FLOOR



Project Overview: Design





Construction Activity

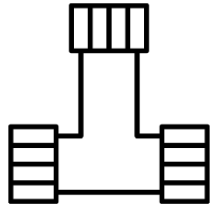


Completed Construction Activities:

- Contractor mobilized construction equipment to site, created entrance to site via Norman Place.
- Modular classrooms were removed from site.
- Perimeter construction fencing was installed.
- Initial sediment and erosion control measures to include silt fence, washout structure, and sediment trap #1 were installed and inspected.
- Clearing, grubbing, and tree removal was performed.
- Topsoil from new building location was removed and stockpiled in designated location.
- Rough grading of site was performed.
- Grading/ import of fill material to establish building pad.

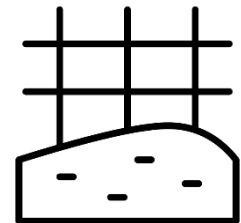


Construction Activity



Upcoming Construction Activities:

- Install new storm drain piping around new building footprint.
- Layout (survey) Area A of new building.
- Excavate, prep, and pour concrete footings and piers.
- Mobilize masonry contractor to begin installation of masonry foundations and piers.
- Backfill interior masonry foundations in preparation for underground plumbing/electrical.





Communication and Engagement



- On-going project updates
- Construction notifications
- On-site construction cam/ [timelapse](#)
- On-going Q&A opportunities – *email us at* capital.programs@pgcps.org



Q&A

Thank you for participating.