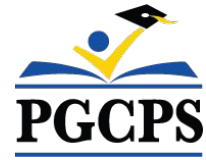


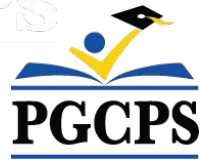


PGCPS درگیر. دیزاین. ساخت. ارتباط. PGCPS



مکتب ابتدایی تمپلتن
جلسه اجتماعی # 2 | فیروری 13، 2023، 6:30 PM





تعهد ما

PGCPS متعهد به حرکت سریع برای ارائه محیط های یادگیری امن، پیشرفته و پایدار برای شاگردان، معلمان و جوامع ما است.



برنامه

معرفی تیم

دیزاین مطابق روز

برنامه ساخت و ساز و تدارکات

سوال و جواب

معرفی تیم

PGCPS

▪ جیسون واشنگتن، سرپرست خدمات حمایتی

مکاتب چاپ آبی

▪ شاوون متلاک، ریس

معرفی تیم



Jeff Barr PLENARY Registered Representative	Hafeez Habib PLENARY Equity Members' Lead Project Manager	Brett Sullivan PLENARY Associate	Adam Dunn PLENARY Assistant Project Manager	Jeremy Ebie PHOENIX Equity Members' Project Manager	Rob Summers PHOENIX Operating Partner	Peter Bullen ELLISDON CAPITAL Senior Director
--	--	---	--	--	--	--



Bill Beschorner MCN Construction Process Executive in Charge	Bassem Boustany MCN Principal	Yonas Menji MCN Lead Construction Manager	Rick Munford MCN Preconstruction Director
---	--	--	--



Sean O'Donnell PERKINS EASTMAN Design Process Executive In Charge & Lead Architect	Omar Calderon PERKINS EASTMAN Design Principal
---	---



Pete Cambell ELLISDON FS Director, P3 Pursuits	Brandon Kelley USF Vice President	Johnathan Bolden RSC President
---	--	---

پلان ساحه روز

- پیاده شدن از بس ها
- پارکینگ وسیله نقلیه
- صنف درسی در فضای آزاد و محل بازی



LEGEND	
①	Entry Plaza
②	Parking Lot
③	Bus Loop
④	Drop-Off
⑤	Play Lawn
⑥	Outdoor Classroom
⑦	Garden Plots
⑧	Pre-K/K Playground
⑨	Primary Playground
⑩	Paved Play
⑪	Monument Sign
⑫	Service Area
⑬	Undeveloped Easement for 57th Avenue
⑭	Temple Knolls Neighborhood Park (MNCPPC)
⑮	Proposed Hamlet Woods Subdivision

انتخاب کاشت فصلی

SPRING



WHITE AZALEA
Rhododendron x



HINO CRIMSON AZALEA
Rhododendron x



DAFFODIL
Narcissus x



DRIFT ROSE
Rosa hybrida

SUMMER



BUTTERFLY MILKWEED
Asclepias tuberosa



BLACK-EYED SUSAN
Rudbeckia fulgida



PENNSYLVANIA SEDGE
Carex pennsylvanica



SNIPPET WIEGELA
Wiegela florida



GOLDEN RAGWORT
Packera aurea



FOAM FLOWER
Tiarella cordifolia



GIANT ALLIUM
Allium Giganteum



ENGLISH LAUREL
Prunus laurocerasus



CORAL BELLS
Heuchera micrantha



FERN MIX
Multiple Species



KODIAK DIERVILLA
Diervilla x



BLUE CASCADE DISTYLIUM
Distylium x

AUTUMN



GROW LOW SUMAC
Rhus aromatica



ARKANSAS BLUE STAR
Amsonia hubrichtii



FEATHER REED GRASS
Calamagrostis x acutiflora

WINTER



PLUM YEW
Cephalotaxus harringtonia



WINTERBERRY
Ilex verticillata



GREY OWL CEDAR
Juniperus virginiana



RED TWIG DOGWOOD
Cornus sericea



LITTLE BLUESTEM
Schizachyrium scoparium



SWEETPIRE
Itea virginica



SARGENT JUNIPER
Juniperus chinensis sargentii



FOTHERGILLA
Fothergilla gardenii



FOUNTAIN GRASS
Pennisetum alopecuroides



WINTER JASMIN
Jasmin nudiflorum



DRAGON LADY HOLLY
Ilex x aquipernyi

تصاویر سابقه



طرح بندی مقدماتی



• صنف های درسی دوران کودکی

ورودی عمومی

قلب مکتب

پلان منزل اول

طرح بندی مقدماتی

- صنف های درسی دوران کودکی



پلان منزل دوم

طرح بندی مقدماتی



• صنف های سطح بالا

پلان منزل دوم

ارتفاعات و پلاستیکاری داخلی



ارتفاعات و پلاستیکاری مطابق روز



Note: Design is subject to change

ارتفاعات و پلاستیکاری مطابق روز

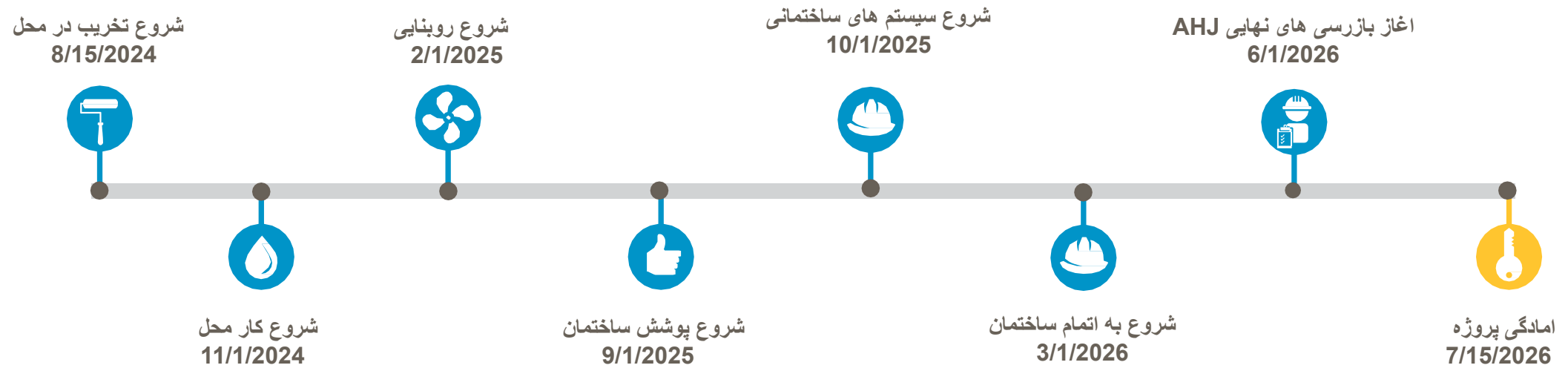


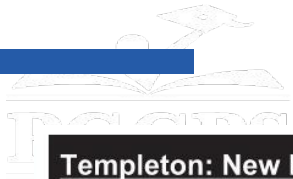
Note: Design is subject to change

ارتفاعات و پلاستر کاری مطابق روز



بررسی برنامه





Templeton: New Building Logistic & Phasing Plan

Sequence 2 - Demolition & Rough Grading

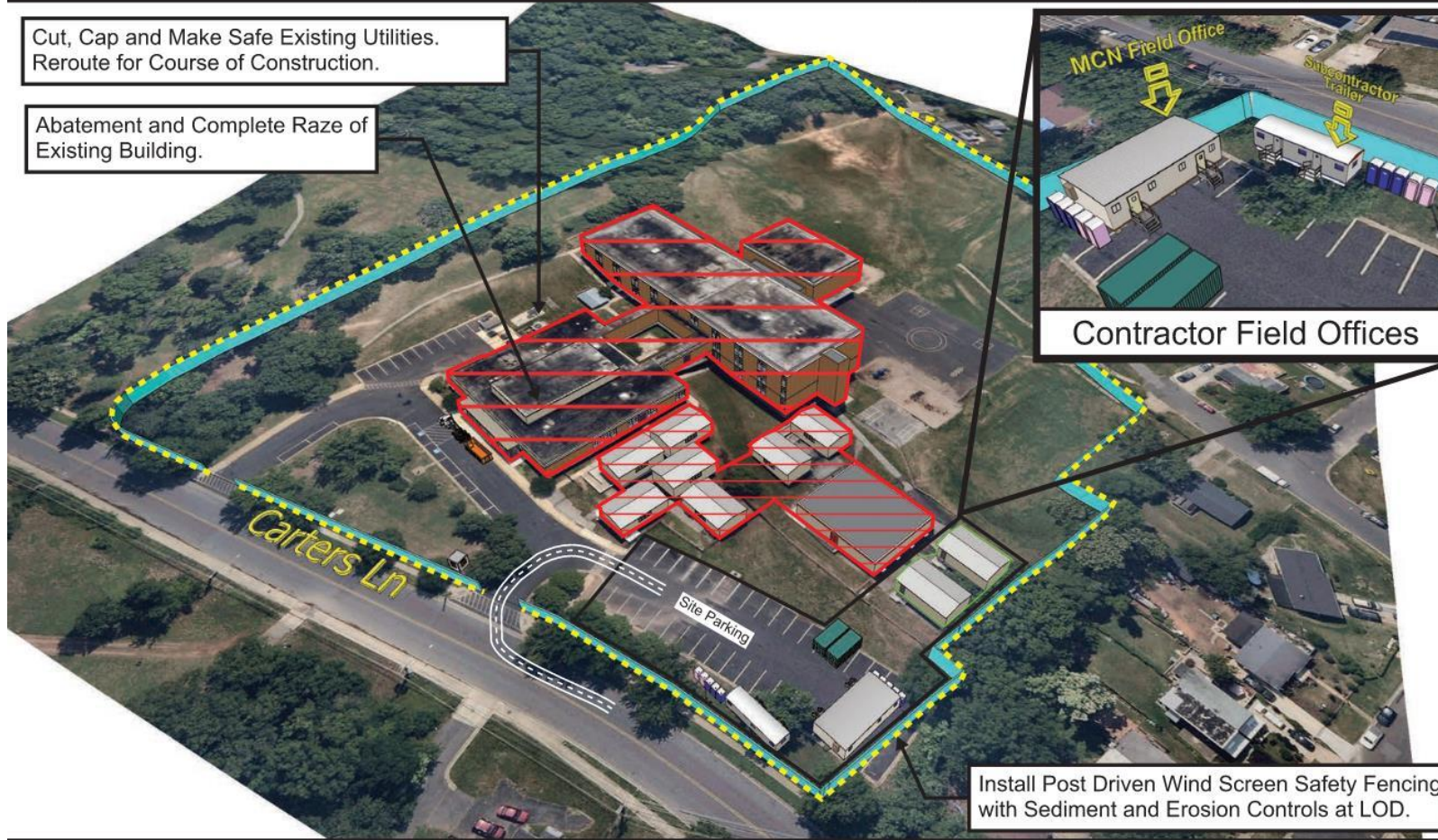


September 2024 - February 2025 | Page 1 of 3

برنامه تدارکات

Cut, Cap and Make Safe Existing Utilities.
Reroute for Course of Construction.

Abatement and Complete Raze of Existing Building.



Install Post Driven Wind Screen Safety Fencing with Sediment and Erosion Controls at LOD.

Sequence 1 - Site Controls & LOD (Not Shown)
Sequence 2 - Demolition & Rough Grading
Sequence 3 - Superstructure & Facade

- : Dedicated Flaggers
- : Vibration & Settlement Monitors

Before the demolition and rough grading process, MCN will establish control over the site by implementing safety fencing and sediment and erosion control systems. Existing utilities will be carefully identified, cut, capped, and made safe. They will then be rerouted and re-purposed as temporary utilities to support the construction activities.



NTS

برنامه تدارکات

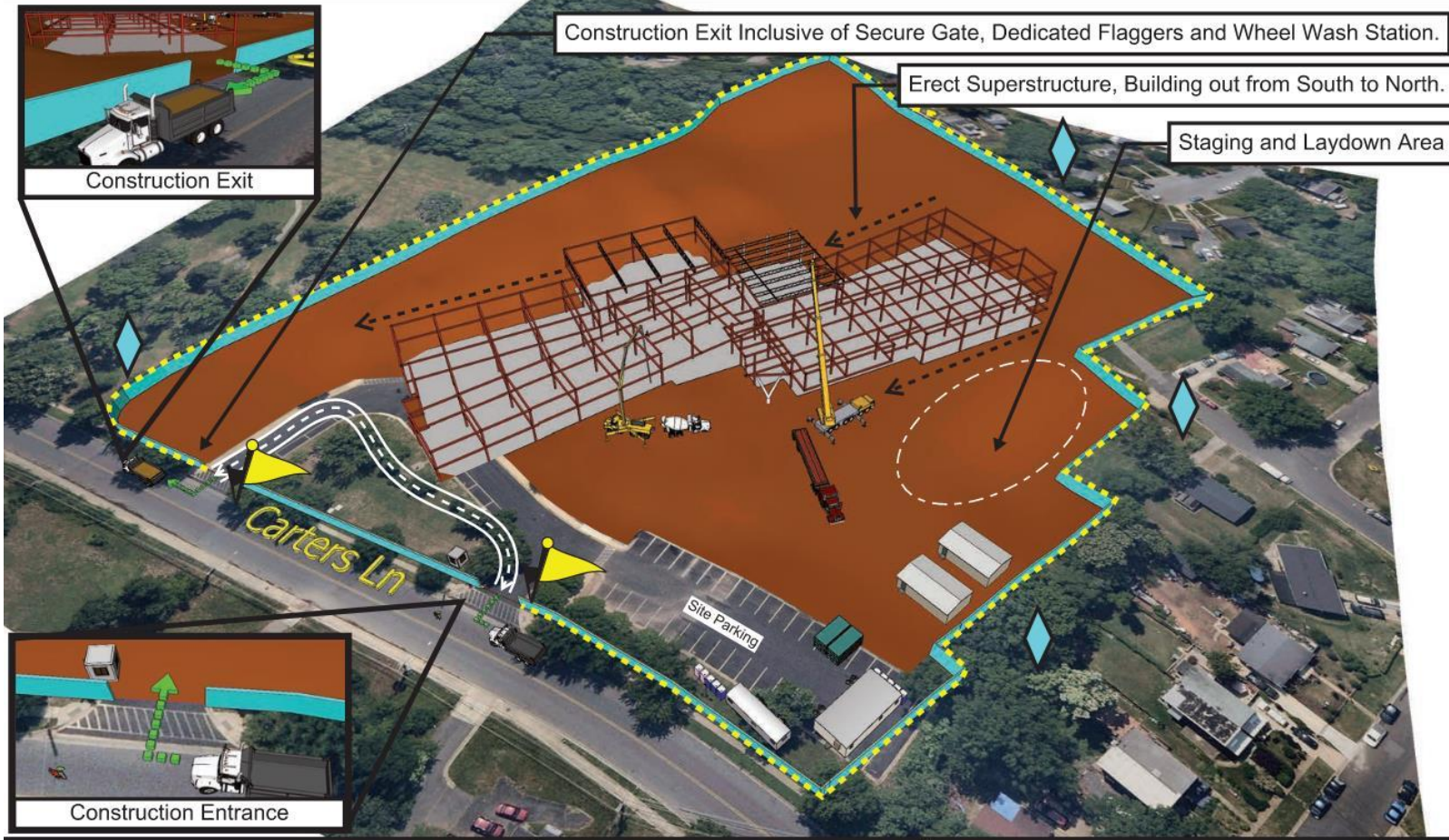
Templeton: New Building Logistic & Phasing Plan

Sequence 3 - Superstructure & Facade



February 2025 - July 2025

Page 2 of 3



Sequence 1 - Site Controls & LOD (Not Shown)
 Sequence 2 - Demolition & Rough Grading
Sequence 3 - Superstructure & Facade

- : Dedicated Flaggers
- : Vibration & Settlement Monitors

The construction of the new school will take place in a location within the existing site that is free from any obstructions. It is expected that the construction activities will be situated at a sufficient distance from neighboring properties to avoid excessive vibration and noise disturbances.



سوالات