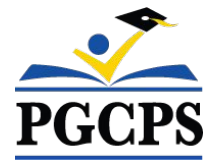




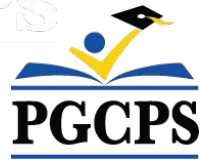
PGCPS . PARTICIPAR. DISEÑAR. CONSTRUIR. COMUNICAR. PGCPS



ESCUELA PRIMARIA TEMPLETON

REUNIÓN COMUNITARIA #2 | 13 DE FEBRERO DE 2023, 6:30 P. M.





Nuestro compromiso

PGCPS está comprometido a trabajar rápidamente para ofrecer entornos de aprendizaje seguros, de última generación y sostenibles para nuestros estudiantes, maestros y comunidades.



Agenda

- Presentaciones del equipo
- Diseño actualizado
- Cronograma y logística de la construcción
- Preguntas y respuestas



Presentaciones del equipo

PGCPS

- **Jason Washington**, *superintendente adjunto de servicios de apoyo*

Escuelas modelo

- **Shawn Matlock**, *director*



Presentaciones del equipo



Jeff Barr PLENARY Registered Representative	Hafeez Habib PLENARY Equity Members' Lead Project Manager	Brett Sullivan PLENARY Associate	Adam Dunn PLENARY Assistant Project Manager	Jeremy Ebie PHOENIX Equity Members' Project Manager	Rob Summers PHOENIX Operating Partner	Peter Bullen ELLISDON CAPITAL Senior Director
--	--	---	--	--	--	--



Bill Beschoner MCN Construction Process Executive in Charge	Bassem Boustany MCN Principal	Yonas Menji MCN Lead Construction Manager	Rick Munford MCN Preconstruction Director
--	--	--	--



Sean O'Donnell PERKINS EASTMAN Design Process Executive In Charge & Lead Architect	Omar Calderon PERKINS EASTMAN Design Principal
---	---



Pete Cambell ELLISDON FS Director, P3 Pursuits	Brandon Kelley USF Vice President	Johnathan Bolden RSC President
---	--	---

Plano actualizado del sitio

- Zona de descarga de pasajeros del autobús
- Estacionamiento de vehículos
- Áreas de salones de clase en exteriores y áreas de juego



LEGEND	
①	Entry Plaza
②	Parking Lot
③	Bus Loop
④	Drop-Off
⑤	Play Lawn
⑥	Outdoor Classroom
⑦	Garden Plots
⑧	Pre-K/K Playground
⑨	Primary Playground
⑩	Paved Play
⑪	Monument Sign
⑫	Service Area
⑬	Undeveloped Easement for 57th Avenue
⑭	Temple Knolls Neighborhood Park (MNCPPC)
⑮	Proposed Hamlet Woods Subdivision



Selección de cultivos

SPRING



WHITE AZALEA
Rhododendron x



HINO CRIMSON AZALEA
Rhododendron x



DAFFODIL
Narcissus x



DRIFT ROSE
Rosa hybrida



GOLDEN RAGWORT
Packera aurea



FOAM FLOWER
Tiarella cordifolia



GIANT ALLIUM
Allium Giganteum



ENGLISH LAUREL
Prunus laurocerasus

SUMMER



BUTTERFLY MILKWEED
Asclepias tuberosa



BLACK-EYED SUSAN
Rudbeckia fulgida



PENNSYLVANIA SEDGE
Carex pennsylvanica



SNIPPET WIEGELA
Wiegela florida



CORAL BELLS
Heuchera micrantha



FERN MIX
Multiple Species



KODIAK DIERVILLA
Diervilla x



BLUE CASCADE DISTYLIUM
Distylium x

AUTUMN



GROW LOW SUMAC
Rhus aromatica



ARKANSAS BLUESTAR
Amsonia hubrichtii



FEATHER REED GRASS
Calamagrostis x acutiflora



LITTLE BLUESTEM
Schizachyrium scoparium



SWEETPIRE
Itea virginica



SARGENT JUNIPER
Juniperus chinensis sargentii



FOTHERGILLA
Fothergilla gardenii

WINTER



PLUM YEW
Cephalotaxus harringtonia



WINTERBERRY
ilex verticillata



GREY OWL CEDAR
Juniperus virginiana



RED TWIG DOGWOOD
Cornus sericea



FOUNTAIN GRASS
Pennisetum alopecuroides



WINTER JASMIN
Jasmin nudiflorum



DRAGON LADY HOLLY
Ilex x aquipernyi



Imágenes precedentes





Plano de la distribución preliminar

- Salones de clase de primera infancia en la planta.
- Entrada principal
- Centro de la escuela



Plano de la primera planta



Plano de la distribución preliminar

- Salones de clase de primera infancia en la planta.



Plano de la planta
baja



Plano de la distribución preliminar

- Salones de clase de los grados superiores



Plano de la segunda planta



Elevaciones y renderizados





Elevaciones y renderizados actualizados



Nota: El diseño está sujeto a cambios



Elevaciones y renderizados actualizados



Nota: El diseño está sujeto a cambios



Elevaciones y renderizados actualizados



Nota: El diseño está sujeto a cambios.



Descripción general del cronograma





Plano logístico

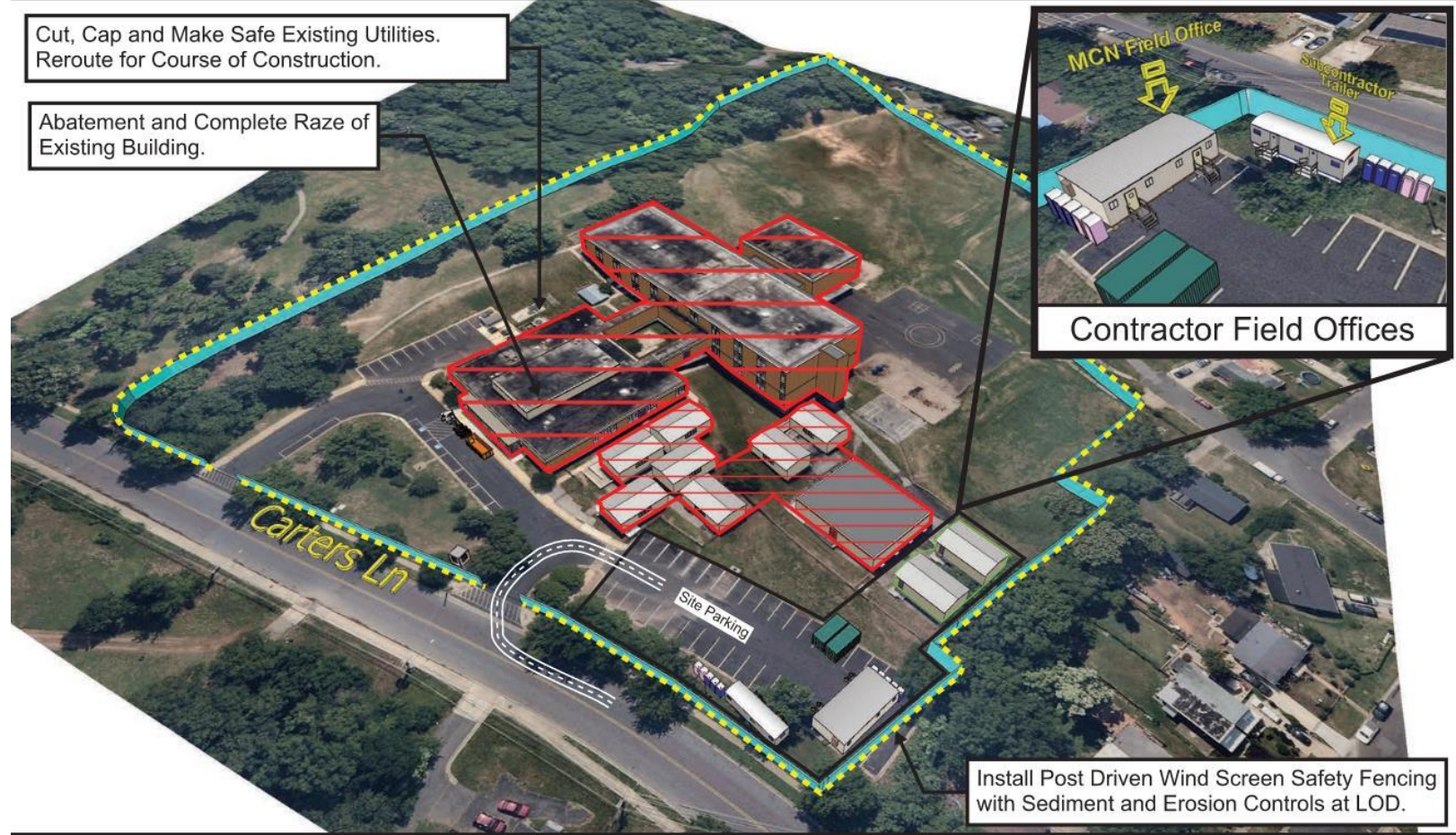
Templeton: New Building Logistic & Phasing Plan

Sequence 2 - Demolition & Rough Grading



September 2024 - February 2025

Page 1 of 3



Sequence 1 - Site Controls & LOD (Not Shown)
Sequence 2 - Demolition & Rough Grading
 Sequence 3 - Superstructure & Facade

- : Dedicated Flaggers
- : Vibration & Settlement Monitors

Before the demolition and rough grading process, MCN will establish control over the site by implementing safety fencing and sediment and erosion control systems. Existing utilities will be carefully identified, cut, capped, and made safe. They will then be rerouted and re-purposed as temporary utilities to support the construction activities.

TECHNICAL



NTS



Plano logístico

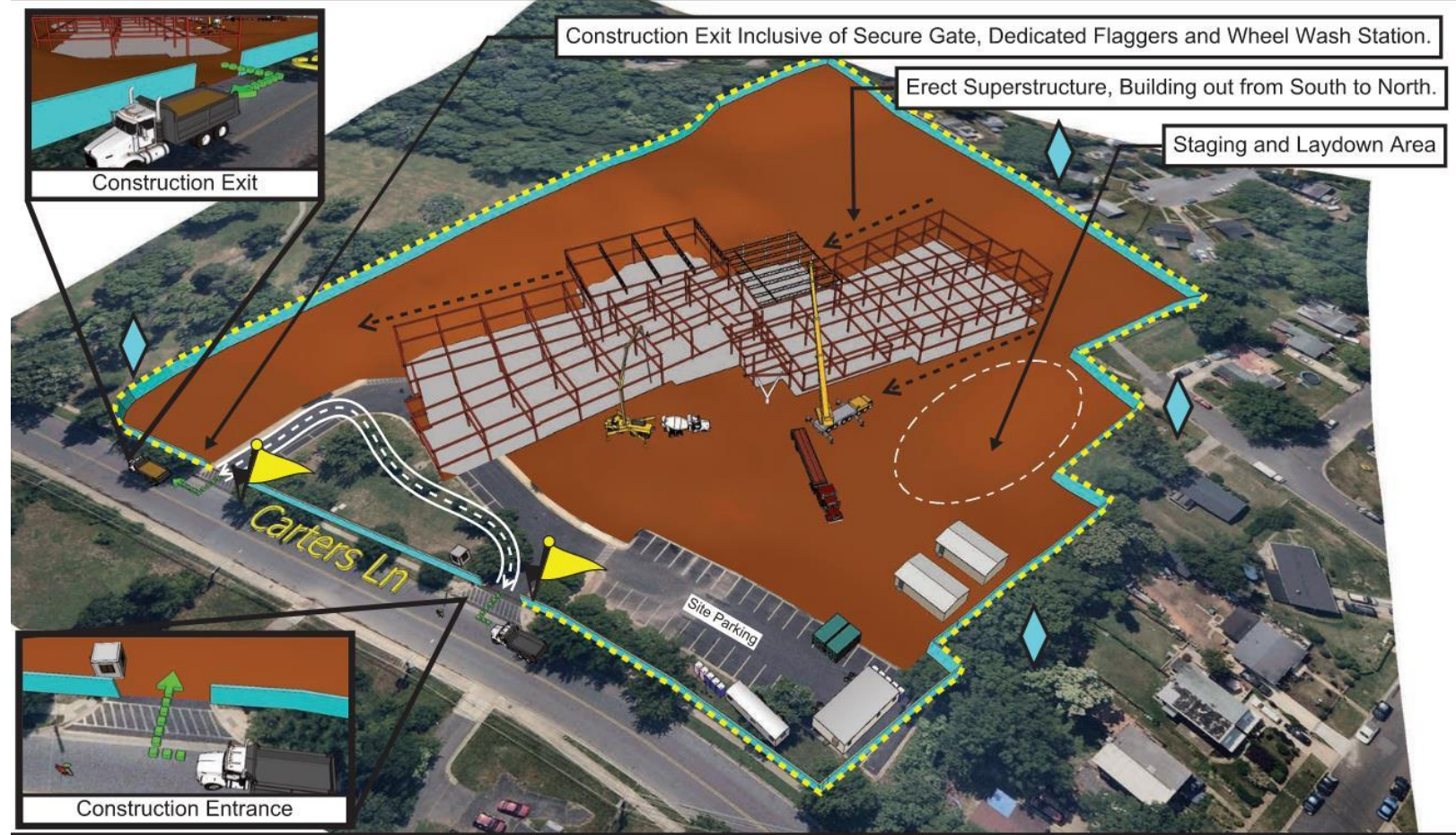
Templeton: New Building Logistic & Phasing Plan

Sequence 3 - Superstructure & Facade



February 2025 - July 2025

Page 2 of 3



Sequence 1 - Site Controls & LOD (Not Shown)
 Sequence 2 - Demolition & Rough Grading
Sequence 3 - Superstructure & Facade

- : Dedicated Flaggers
- : Vibration & Settlement Monitors

The construction of the new school will take place in a location within the existing site that is free from any obstructions. It is expected that the construction activities will be situated at a sufficient distance from neighboring properties to avoid excessive vibration and noise disturbances.

TECHNICAL APPENDIX A-304



NTS

Preguntas